

# "ANOVA" Heavy Duty Torsion System



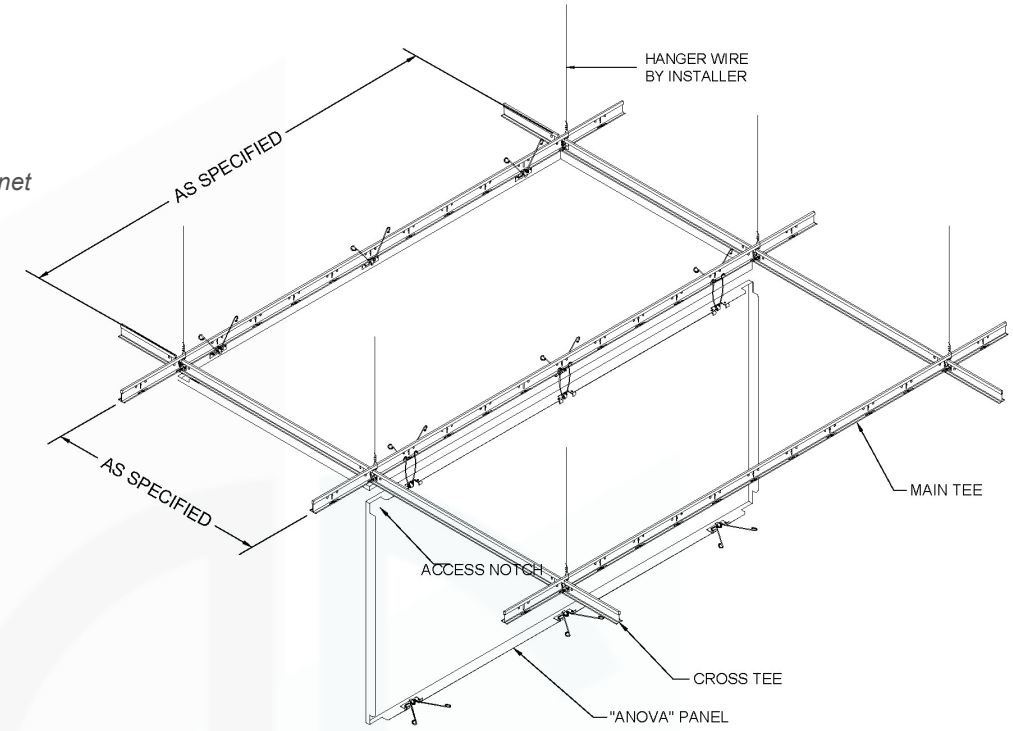
Project: Cal State San Bernardino Extended Learning Expansion/ "ANOVA" Torsion Spring



Office- 909-947-3287  
Cell- 626-393-1209



[brianking@innovative-as.net](mailto:brianking@innovative-as.net)



**SYSTEM ISOMETRIC**



High NRC available with perforation and acoustical material combinations

**Acoustics**



The "ANOVA" system is produced to meet ASTM 635 / ASTM 636  
ASTM E84 / ASTM C423



One of the most versatile and accessible systems on the market. Grid members are concealed by panel joints. Panel modules can be custom sized. Grid members are pre slotted to accept torsion springs. Torsion spring clips are factory installed in panel flanges. Torsion springs are made from non corrosive stainless steel. This system integrates well with typical lighting and HVAC conditions.

**Information**



<b>Standard Panel Sizes</b>	2' x 2'	2' x 4'	2'-6" x 2'-6"	42" x 48"
<b>Custom Sizes Available</b>	Yes	Consult Factory		
<b>System Accessibility</b>	Yes	All panels hinge without removal for access		
<b>Acoustical</b>	Yes	Perforation and Black Soundtex		
<b>Material</b>	Aluminum	.040"-.063"-.080" Thickness Available		
<b>Suspension</b>	Heavy Duty	15/16" Face -Rated for all seismic zones and ASTM		



**Perforation**

A wide variety of perforations are available. We have a pattern solution for aesthetics and acoustics



**HEAVY DUTY GRID SYSTEM**



We provide a Heavy Duty Rated grid system that meets all seismic zones and local building codes

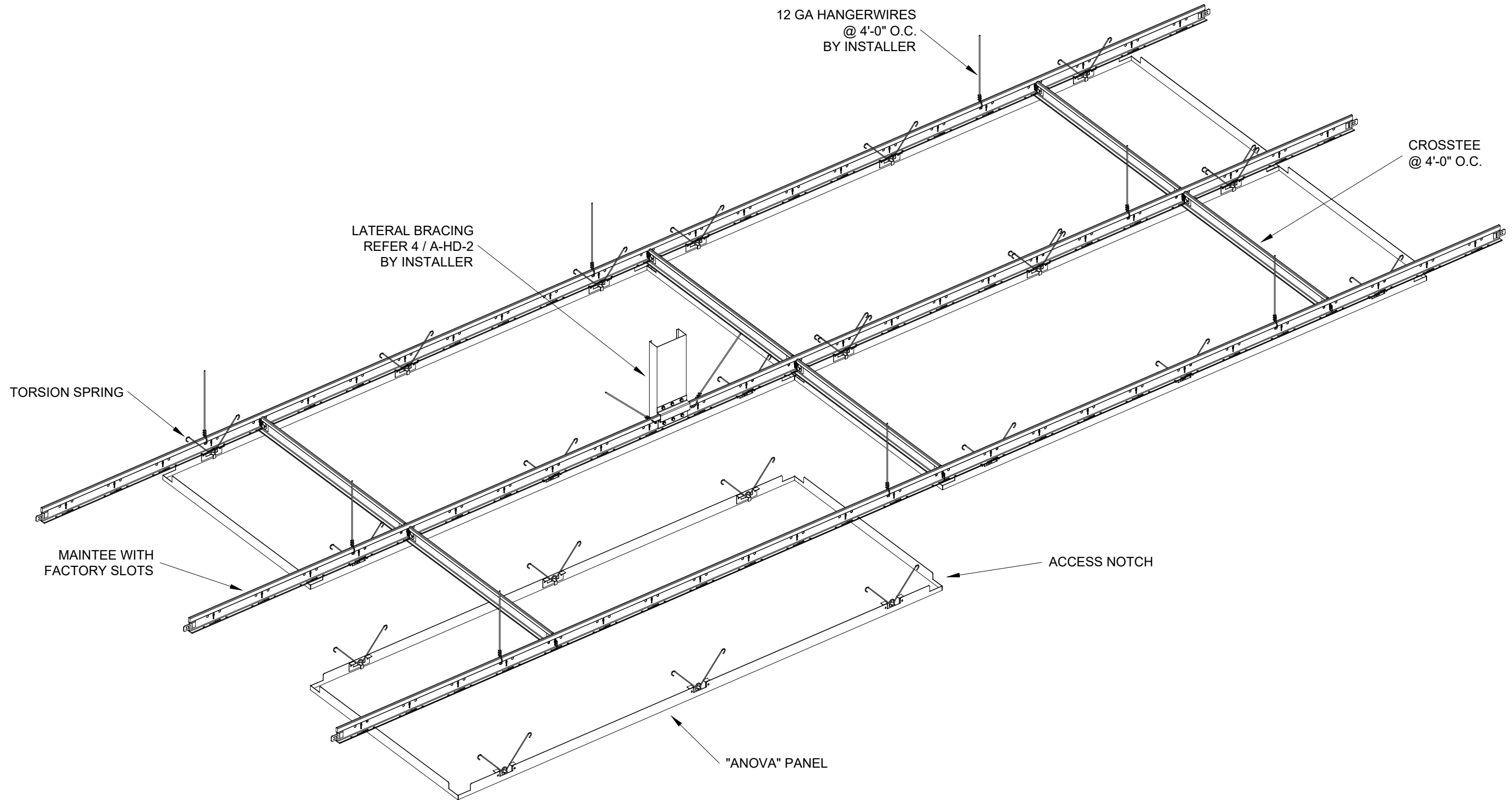


**Green Building**



**DURABLE**

Panels are non-corrosive and can handle almost any condition. They are maintenance and access friendly and will last a very long time.



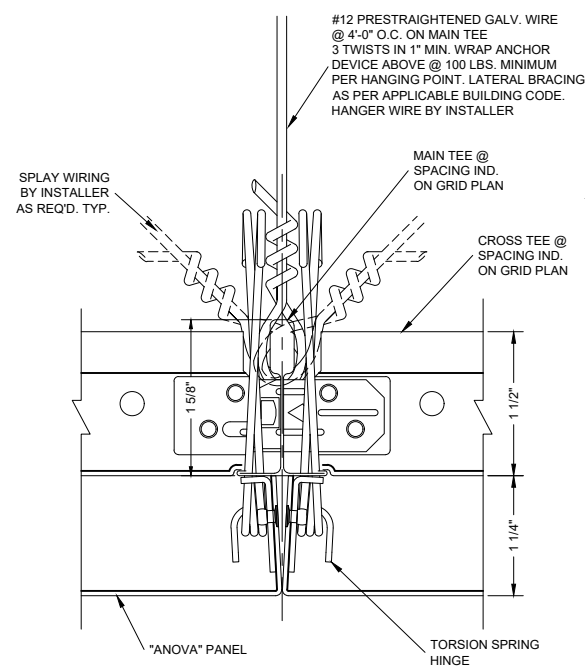
3227 PROGRESS CIRCLE  
 JURUPA VALLEY, CA 91752  
 CELL: 626-393-1209  
 EMAIL: BRIANKING@INNOVATIVE-AS.NET

"ANOVA" HEAVY DUTY TORSION SPRING  
 MATERIAL : .040" ALUMINUM  
 FINISH : PAINT / WOOD / ANODIZED  
 PERFORATED / NON-PERFORATED

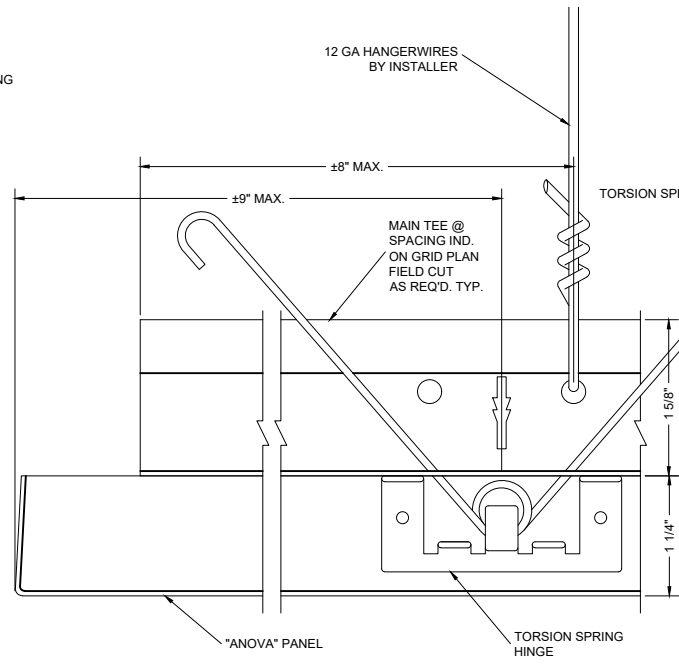
**"ANOVA" HEAVY DUTY ISOMETRIC VIEW**  
 DRAWING NUMBER : A-HD-1  
 SCALE : N T S

THESE DRAWINGS ARE THE PROPERTY OF I.A.S. AND ARE NOT TO BE COPIED OR TRANSMITTED WITHOUT PRIOR WRITTEN CONSENT OF I.A.S. ANY UNAUTHORIZED REPRODUCTION OR USE OF DESIGN INTENT AS ILLUSTRATED IS PROHIBITED WITHOUT THE EXPRESS WRITTEN CONSENT OF I.A.S.

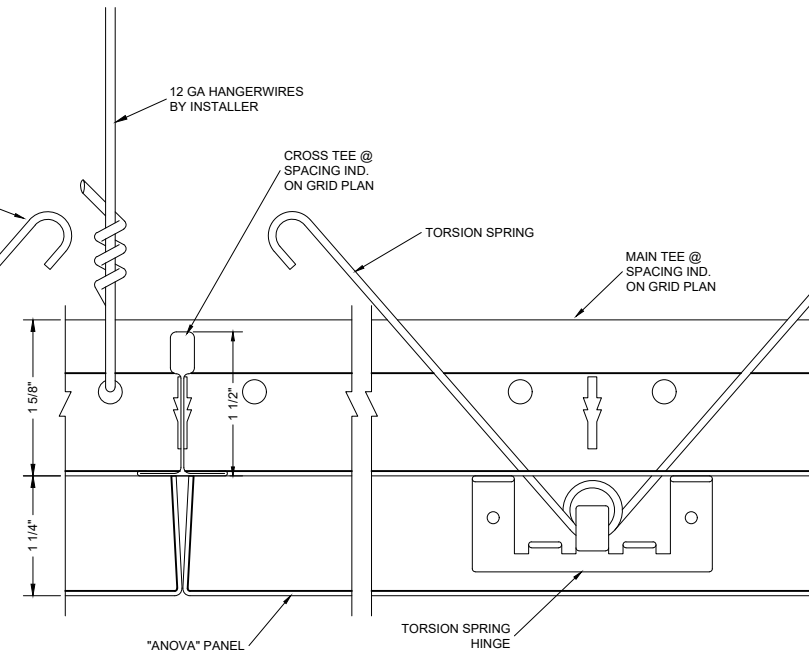




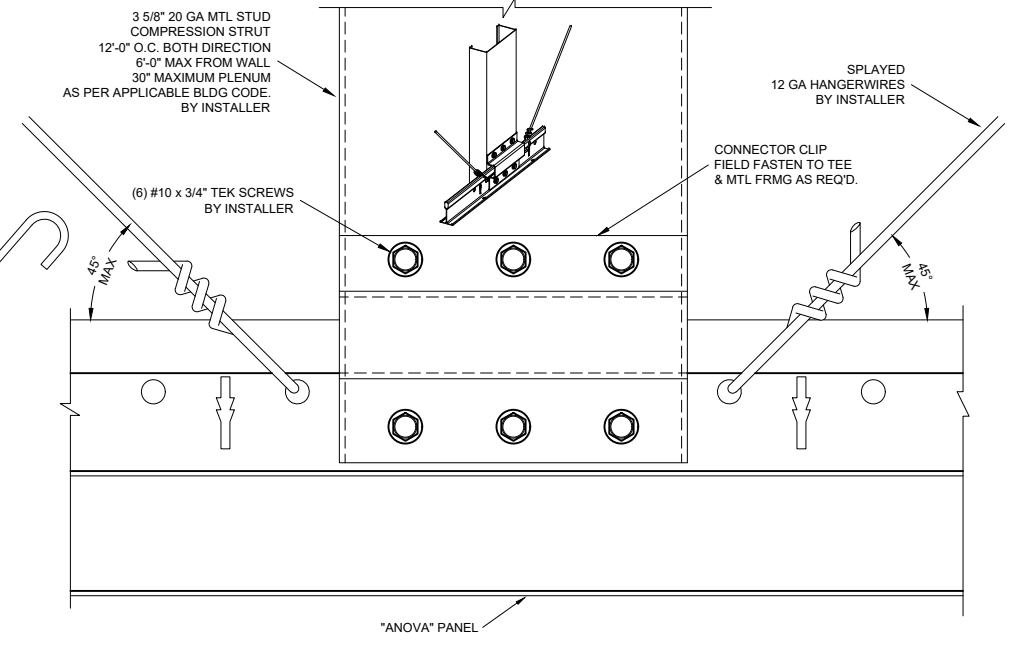
**1** "ANOVA" PANEL JOINT DETAIL  
SCALE: HALF SIZE



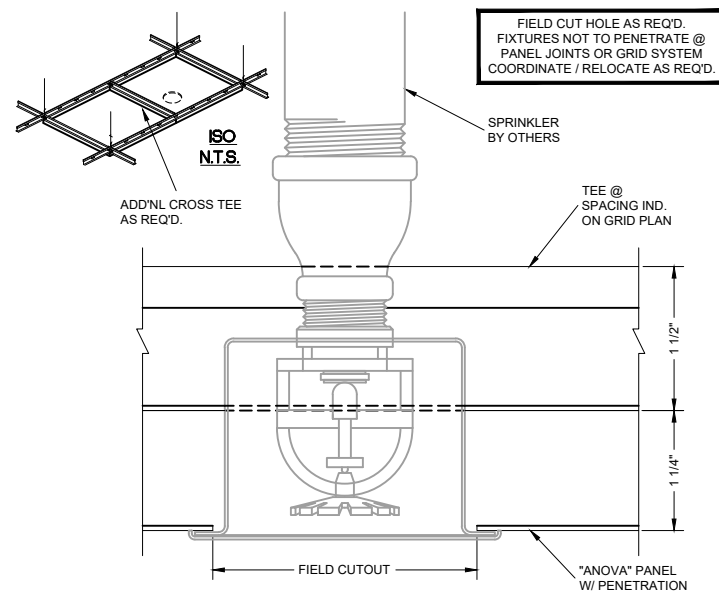
**2** "ANOVA" PERIMETER DETAIL  
SCALE: HALF SIZE



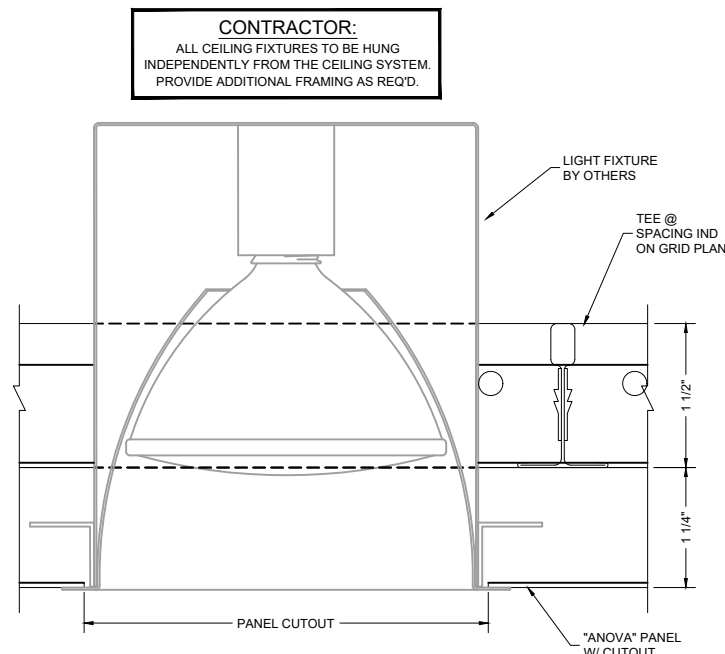
**3** "ANOVA" PANEL JOINT DETAIL  
SCALE: HALF SIZE



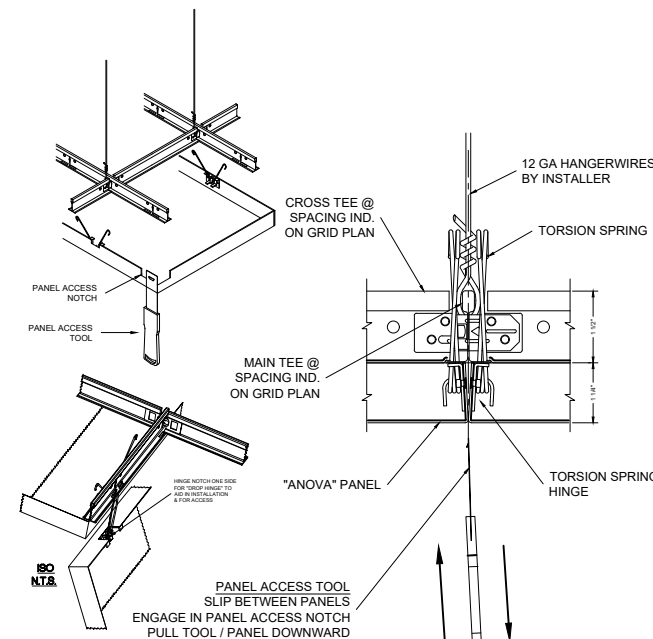
**4** "ANOVA" DETAIL @ LATERAL BRACING  
SCALE: HALF SIZE



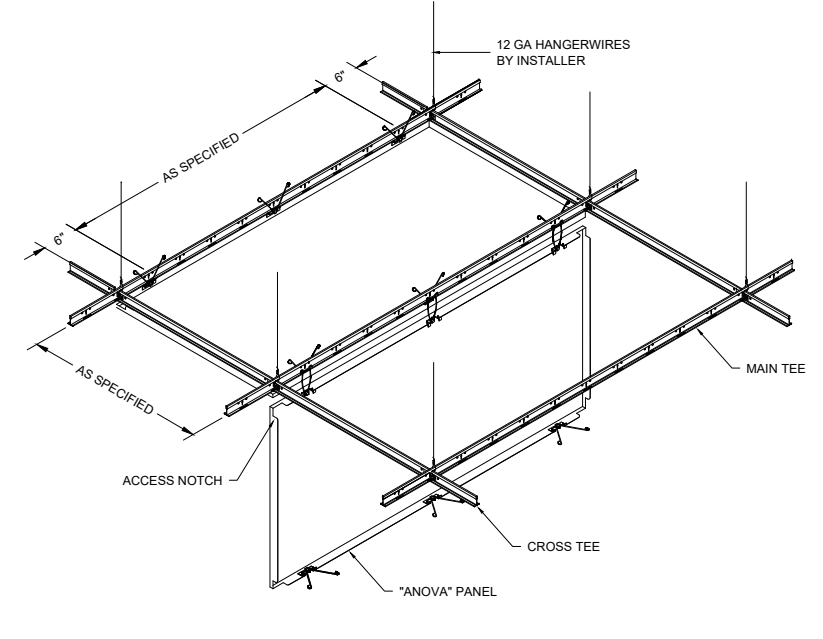
**5** "ANOVA" DETAIL @ SPRINKLER  
SCALE: N T S



**6** "ANOVA" DETAIL @ DOWNLIGHTS  
SCALE: N T S



**7** "ANOVA" ACCESS / HINGE DETAIL  
SCALE: N T S



**8** "ANOVA" PANEL HINGE ISOMETRIC  
SCALE: N T S

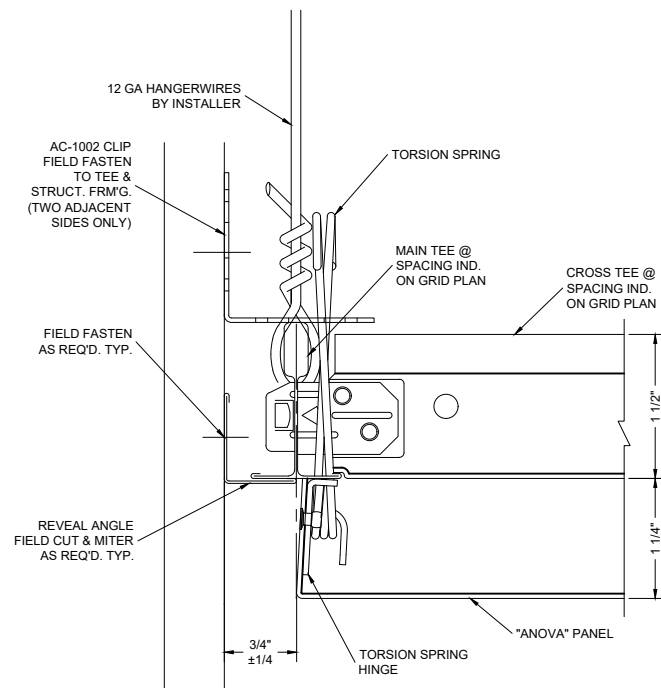


3227 PROGRESS CIRCLE  
JURUPA VALLEY, CA 91752  
CELL: 626-393-1209  
EMAIL: BRIANKING@INNOVATIVE-AS.NET

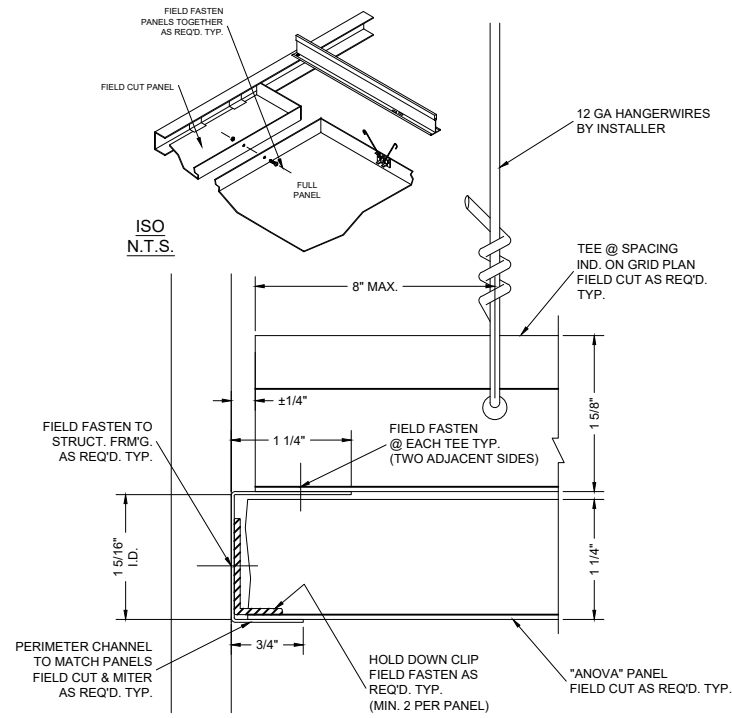
"ANOVA" HEAVY DUTY TORSION SPRING  
MATERIAL : .040" ALUMINUM  
FINISH : PAINT / WOOD / ANODIZED  
PERFORATED / NON-PERFORATED

"ANOVA" HEAVY DUTY TYPICAL DETAILS I  
DRAWING NUMBER : A-HD-2  
SCALE : AS SHOWN

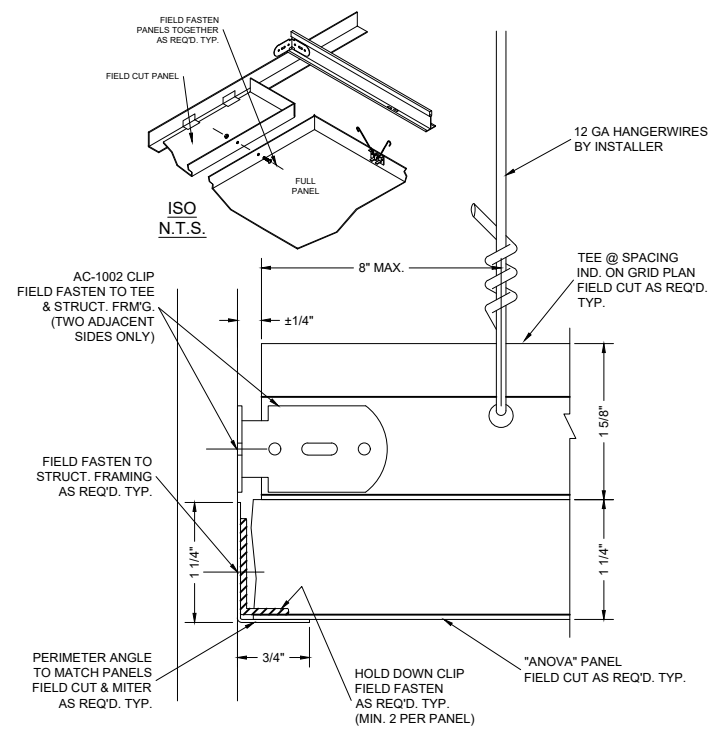
THESE DRAWINGS ARE THE PROPERTY OF I.A.S. AND ARE NOT TO BE COPIED OR TRANSMITTED WITHOUT PRIOR WRITTEN CONSENT OF I.A.S. ANY UNAUTHORIZED REPRODUCTION OR USE OF DESIGN INTENT AS ILLUSTRATED IS PROHIBITED WITHOUT THE EXPRESS WRITTEN CONSENT OF I.A.S.



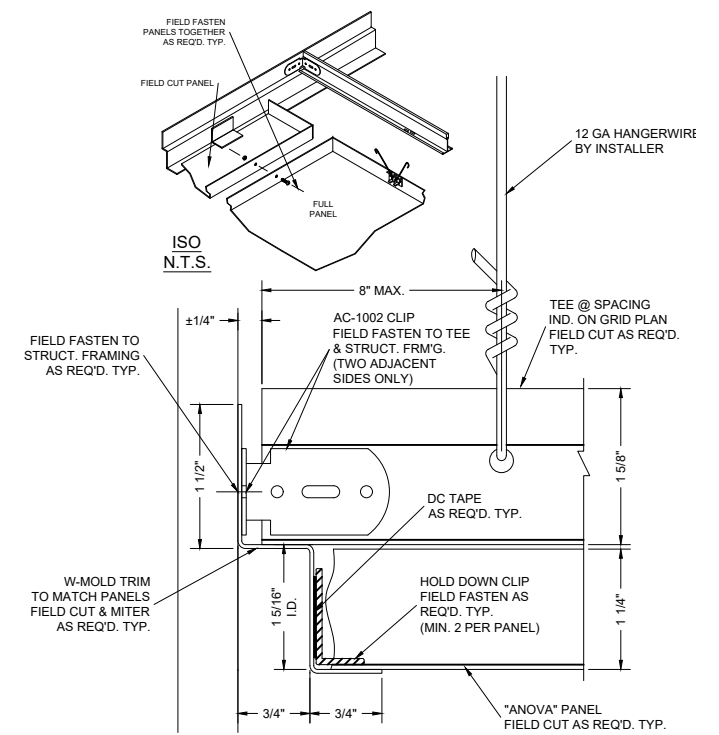
**1** "ANOVA" PERIMETER DETAIL  
SCALE: HALF SIZE



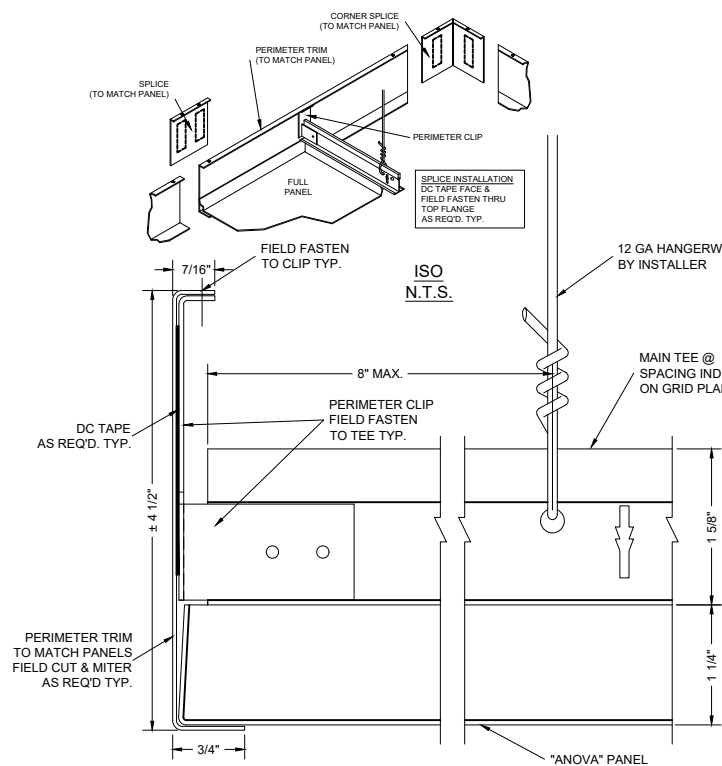
**2** "ANOVA" PERIMETER DETAIL  
SCALE: HALF SIZE



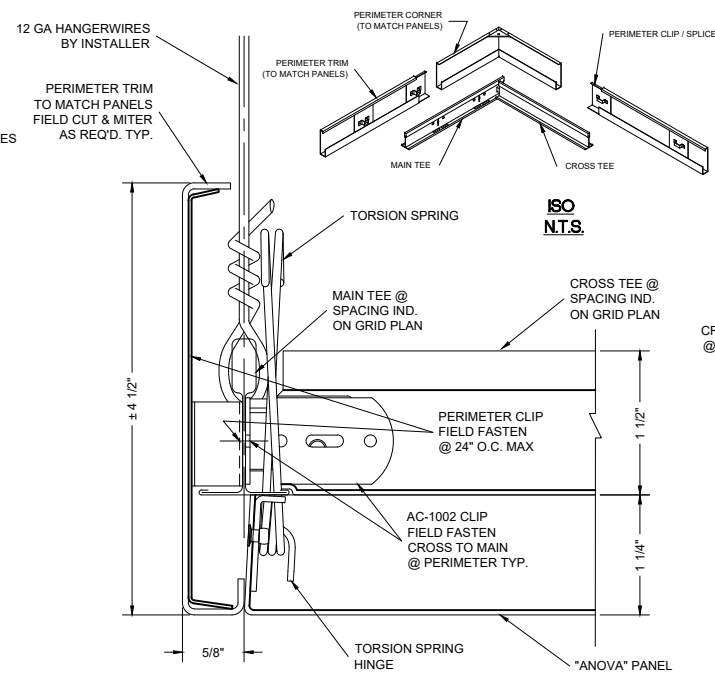
**3** "ANOVA" PERIMETER DETAIL  
SCALE: HALF SIZE



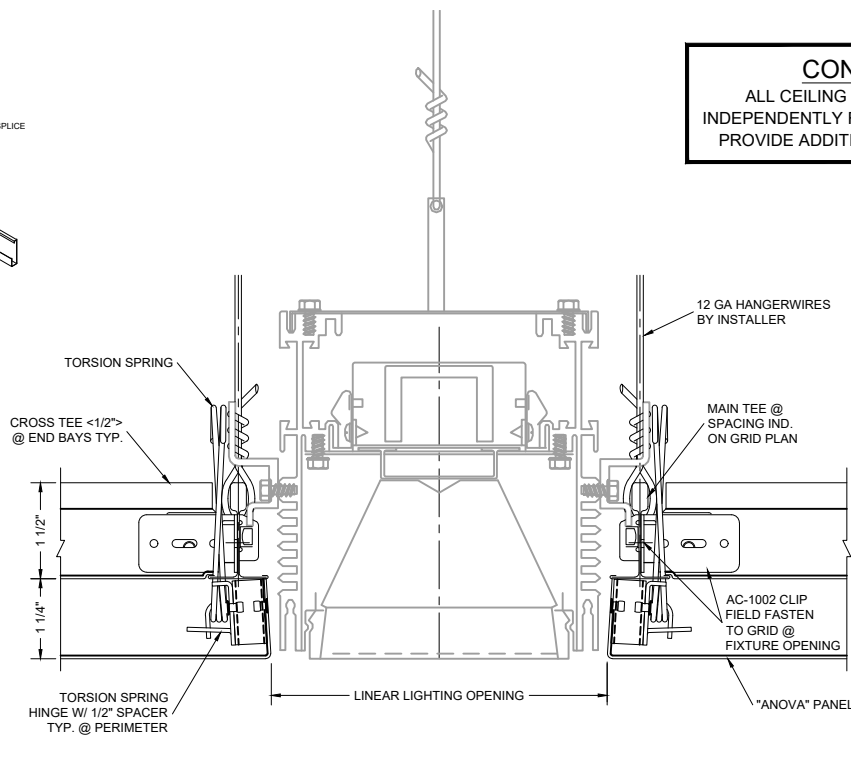
**4** "ANOVA" PERIMETER DETAIL  
SCALE: HALF SIZE



**5** "ANOVA" PERIMETER DETAIL  
SCALE: HALF SIZE

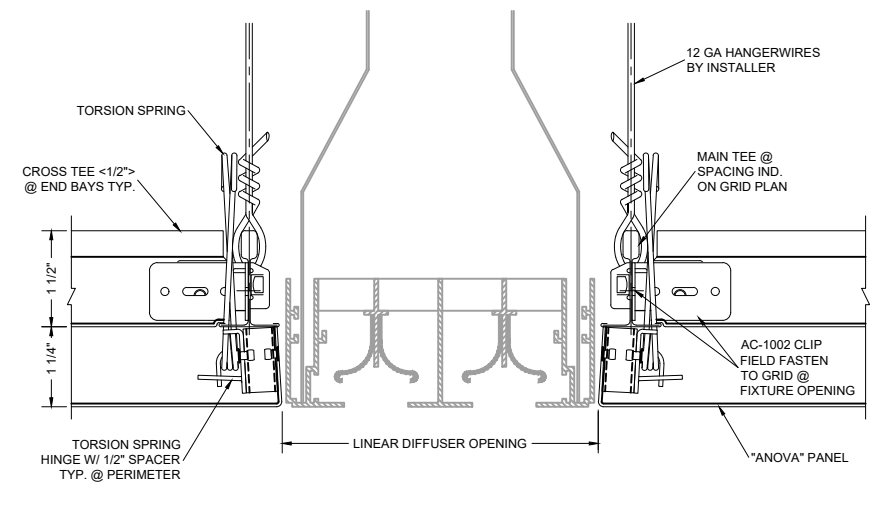


**6** "ANOVA" PERIMETER DETAIL  
SCALE: HALF SIZE



**7** "ANOVA" LINEAR LIGHTING DETAIL  
SCALE: 4" = 1'-0"

**CONTRACTOR:**  
ALL CEILING FIXTURES TO BE HUNG  
INDEPENDENTLY FROM THE CEILING SYSTEM.  
PROVIDE ADDITIONAL FRAMING AS REQ'D.



**8** "ANOVA" LINEAR DIFFUSER DETAIL  
SCALE: 4" = 1'-0"



3227 PROGRESS CIRCLE  
JURUPA VALLEY, CA 91752  
CELL: 626-393-1209  
EMAIL: BRIANKING@INNOVATIVE-AS.NET

"ANOVA" HEAVY DUTY TORSION SPRING  
MATERIAL : .040" ALUMINUM  
FINISH : PAINT / WOOD / ANODIZED  
PERFORATED / NON-PERFORATED

"ANOVA" HEAVY DUTY TYPICAL DETAILS II  
DRAWING NUMBER : A-HD-3  
SCALE : AS SHOWN

THESE DRAWINGS ARE THE PROPERTY OF I.A.S. AND ARE NOT TO BE COPIED OR TRANSMITTED WITHOUT PRIOR WRITTEN CONSENT OF I.A.S. ANY UNAUTHORIZED REPRODUCTION OR USE OF DESIGN INTENT AS ILLUSTRATED IS PROHIBITED WITHOUT THE EXPRESS WRITTEN CONSENT OF I.A.S.