

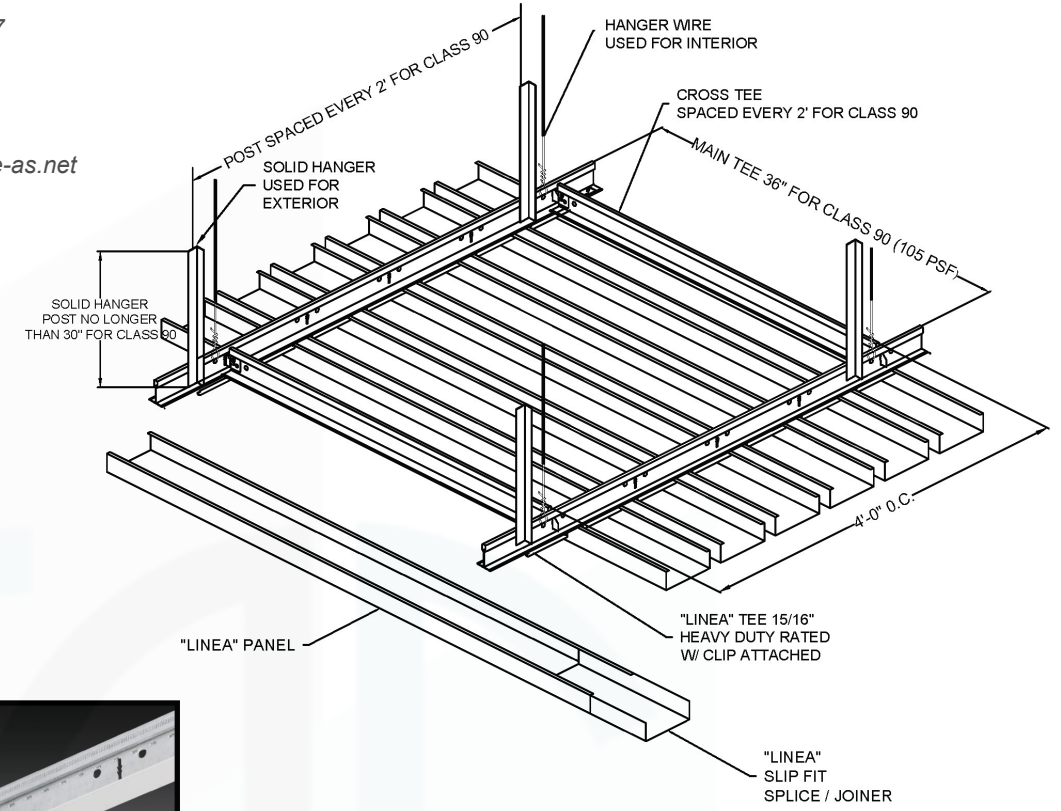
# "LINEA" Snap In Strip System



Project: Region 10 ESC Conference Center Renovations/ Richardson, TX

 Office 909-947-3287

 [brianking@innovative-as.net](mailto:brianking@innovative-as.net)



**SYSTEM ISOMETRIC**



**HEAVY DUTY GRID SYSTEM  
SEISMIC ALL ZONES**



The "Linea" Strip Snap In System is one of our most economical ceiling systems and is widely used throughout the decorative acoustical ceiling industry. We can offer a standard quick ship system or a fully custom designed system. We have several panel finish options and several perforation options to choose from. We incorporate a Heavy Duty Rated grid system in our design so all seismic zones and local building codes are met and satisfied.

**Information**



<b>Standard Module Sizes</b>	4"	6"	8"	10"
<b>Standard Panel Length</b>	8' & 10'			
<b>System Accessibility</b>	No			
<b>Acoustical</b>	Yes	Perforation and Black Soundtex		
<b>Material</b>	Aluminum	.040" Thick recommended for durability		
<b>Suspension</b>	Heavy Duty	15/16" Face -Rated for all seismic zones and ASTM		
<b>Reveal Between Panels</b>	13/16" (.812")	Reveals can be open or closed		



High NRC available with perforation and acoustical material combinations  
**Sound Absorption**



**Perforation**

A wide variety of perforations are available. We have a pattern solution for aesthetics and acoustics



We provide a Heavy Duty Rated grid system that meets all seismic zones and local building codes

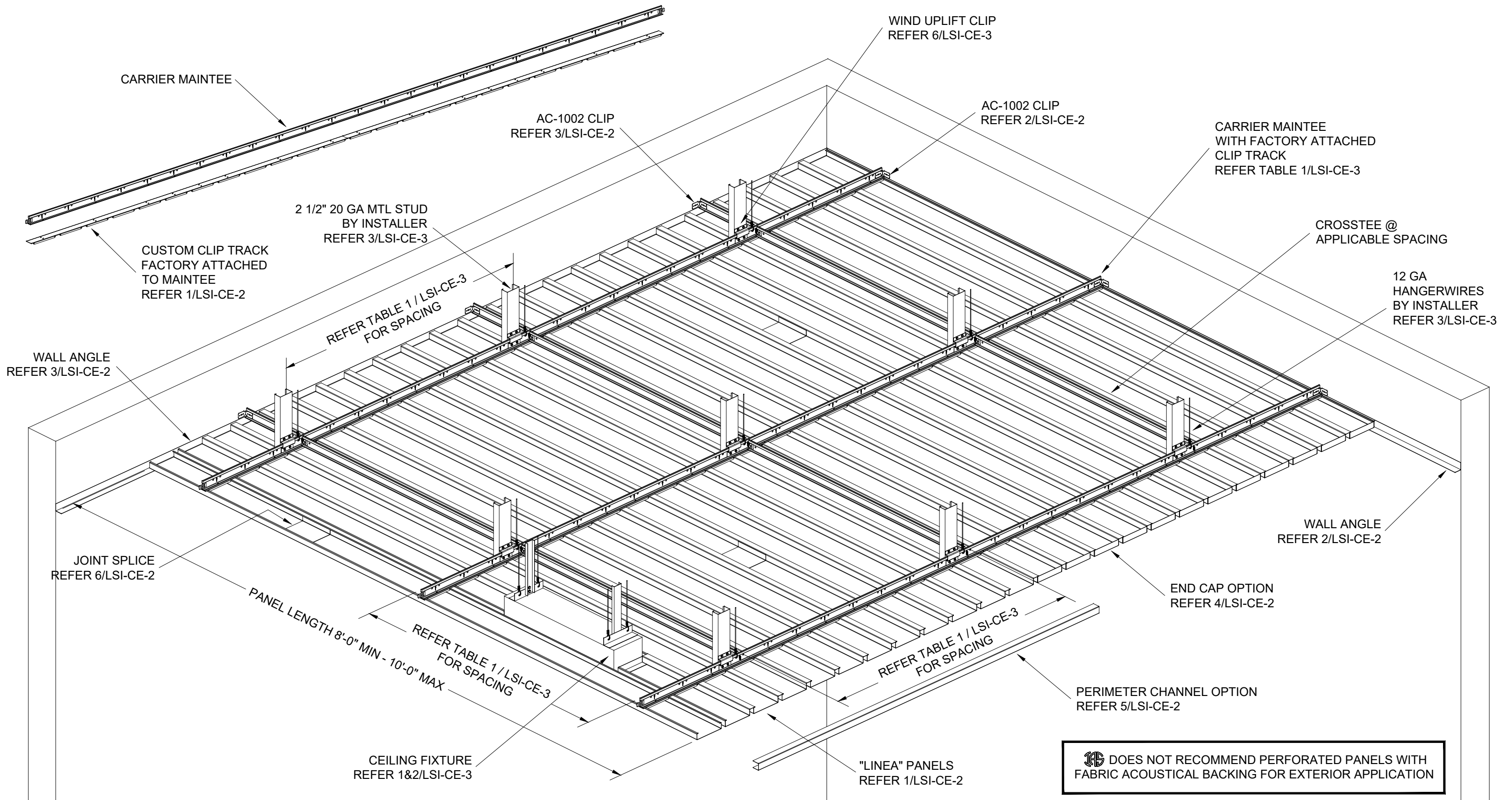


"Slatz" system is produced to meet ASTM 635 / ASTM 636  
ASTM E84 / ASTM C423



**Green Building**





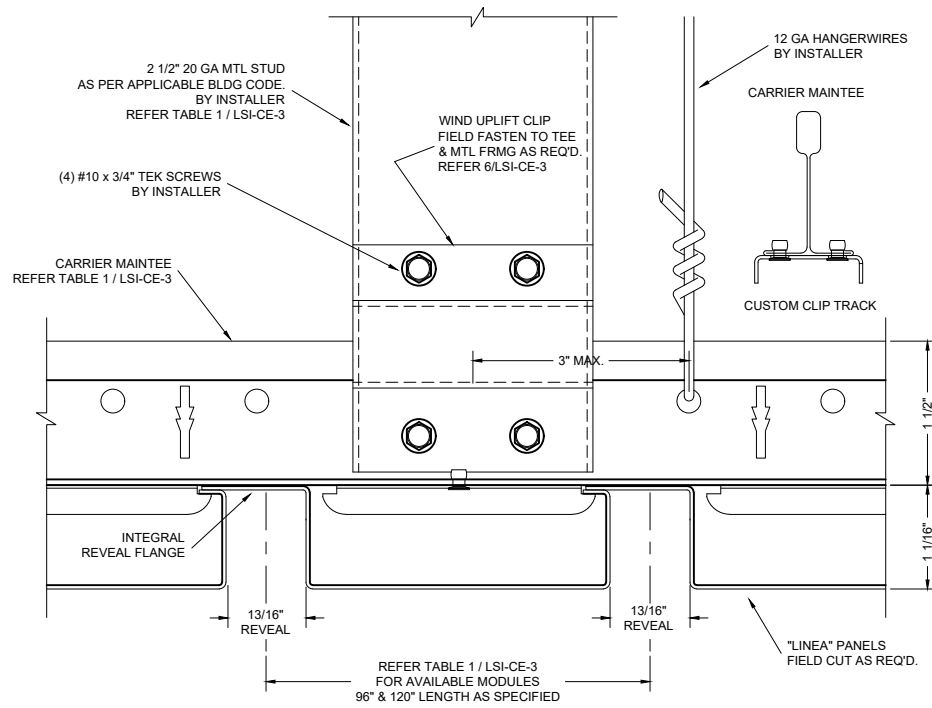
THESE DRAWINGS ARE THE PROPERTY OF I.A.S. AND ARE NOT TO BE COPIED OR TRANSMITTED WITHOUT PRIOR WRITTEN CONSENT OF I.A.S. ANY UNAUTHORIZED REPRODUCTION OR USE OF DESIGN INTENT AS ILLUSTRATED IS PROHIBITED WITHOUT THE EXPRESS WRITTEN CONSENT OF I.A.S.



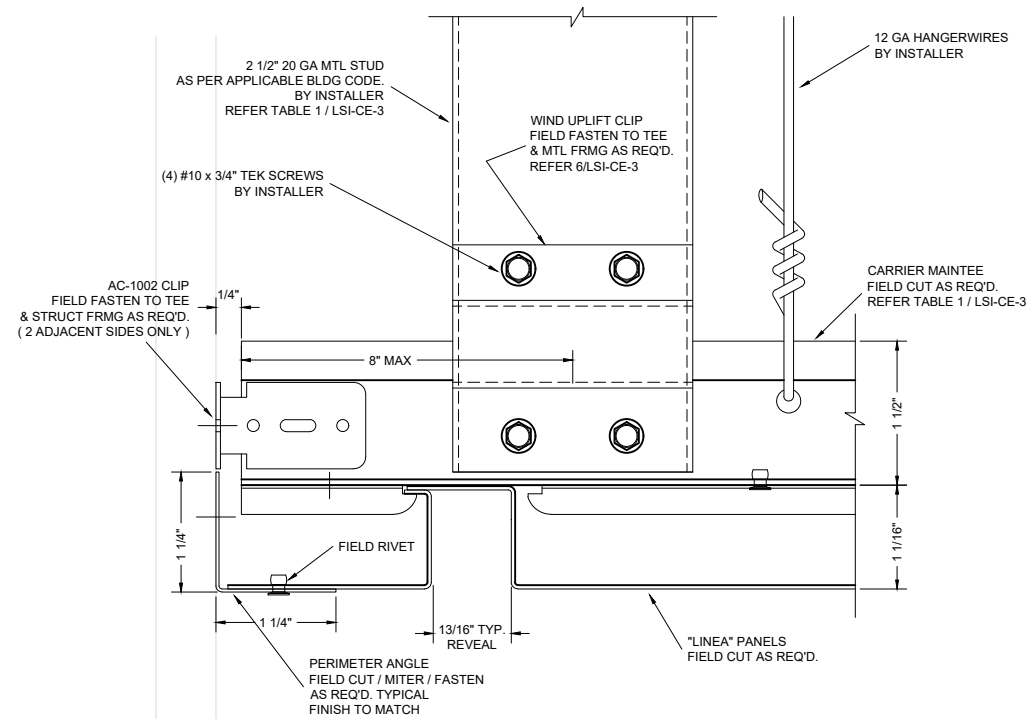
3227 PROGRESS CIRCLE  
MIRA LOMA, CA 91752  
OFFICE: 909-947-3287  
CELL: 626-393-1209  
EMAIL: BRIANKING@INNOVATIVE-AS.NET

"LINEA" SNAP-IN SYSTEM  
MATERIAL : .040" ALUMINUM  
FINISH : PAINT / WOOD / ANODIZED  
NON-PERFORATED

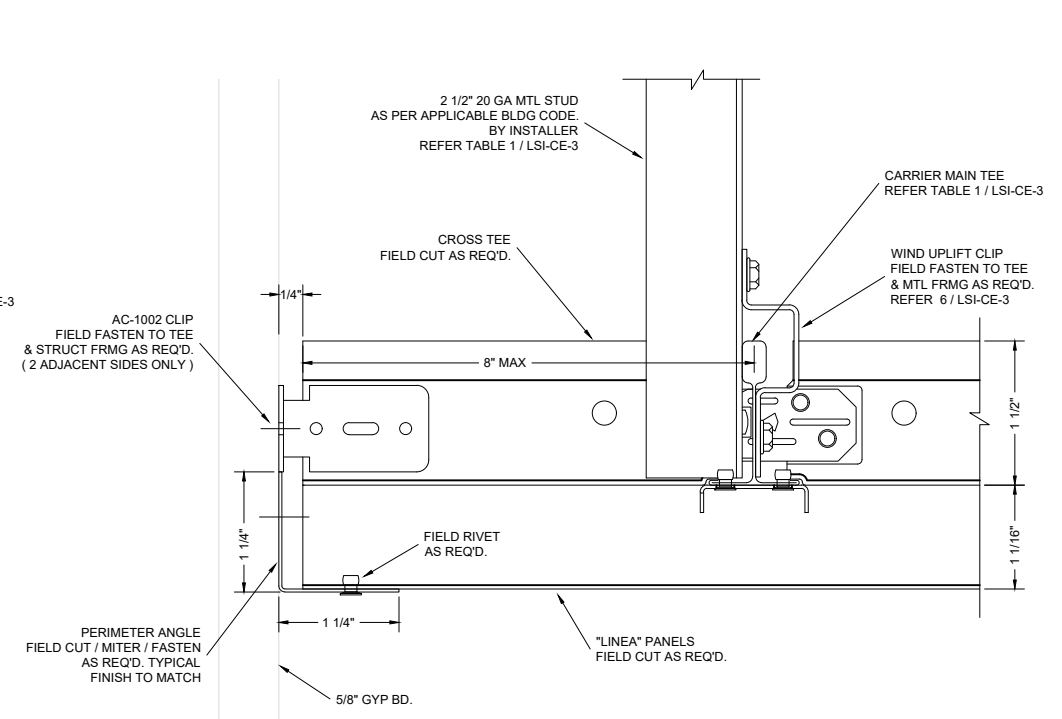
**EXTERIOR CLOSE REVEAL ISOMETRIC VIEW**  
DRAWING NUMBER : LSI-CE-1  
SCALE : N T S



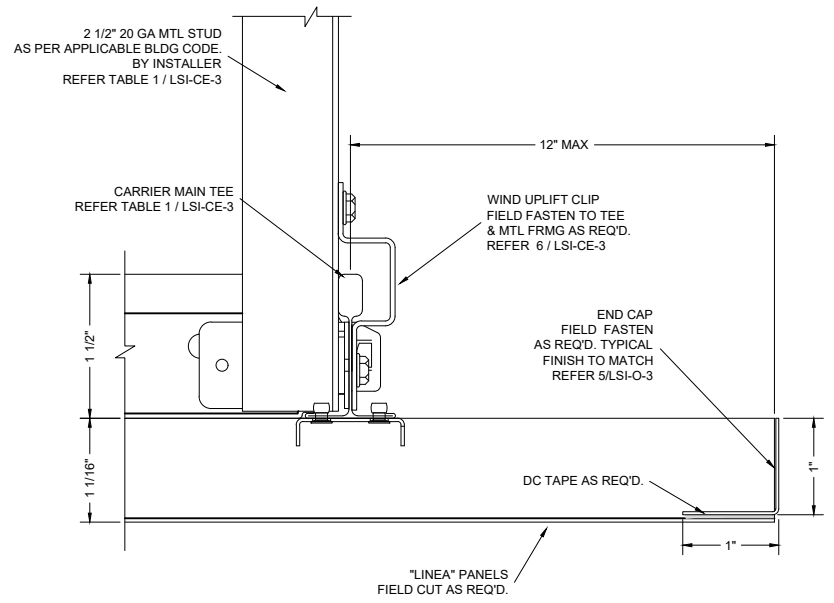
**1** "LINEA" PANEL MODULES DETAIL  
SCALE: HALF SIZE



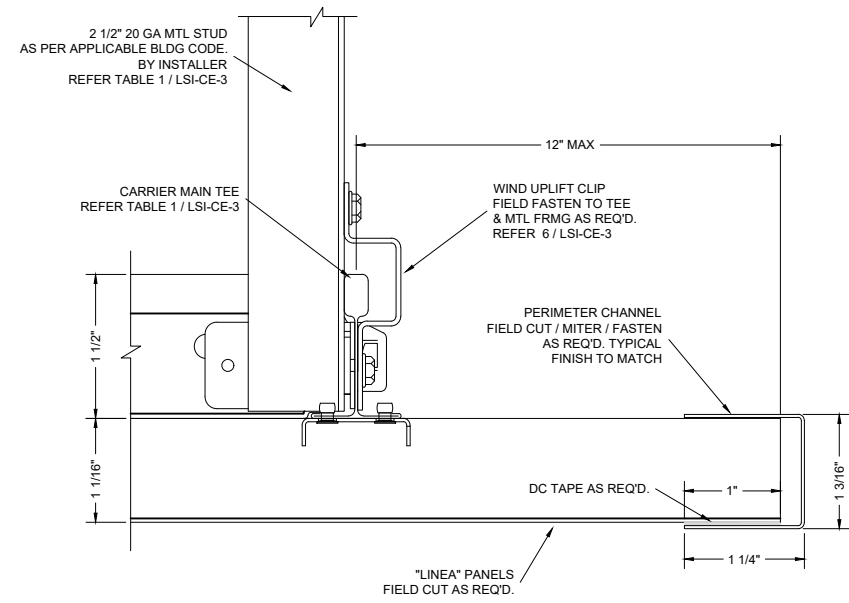
**2** "LINEA" PERIMETER DETAIL  
SCALE: HALF SIZE



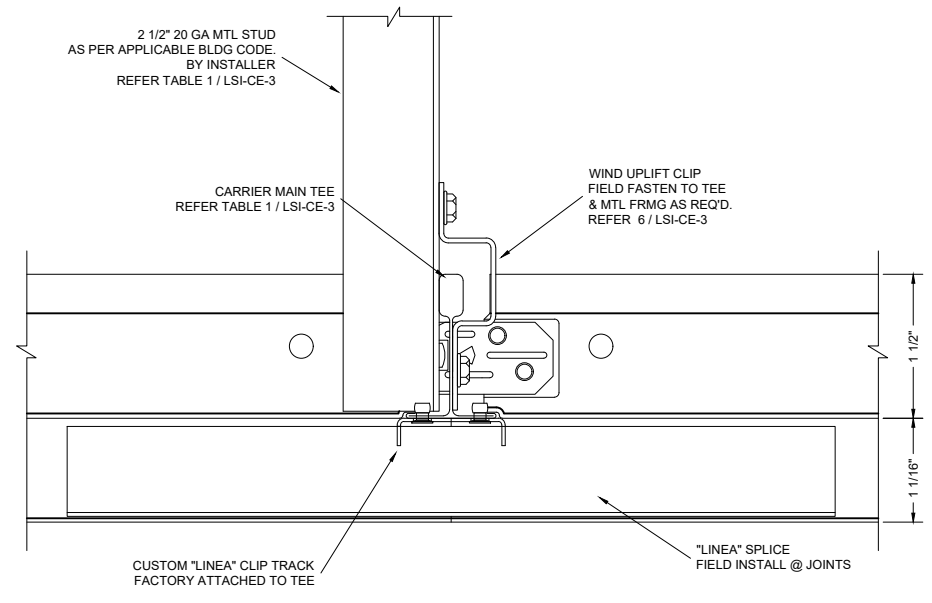
**3** "LINEA" PERIMETER DETAIL  
SCALE: HALF SIZE



**4** "LINEA" END CAP DETAIL  
SCALE: HALF SIZE



**5** "LINEA" PERIMETER DETAIL  
SCALE: HALF SIZE



**6** "LINEA" JOINT SPLICE DETAIL  
SCALE: HALF SIZE

THESE DRAWINGS ARE THE PROPERTY OF I.A.S. AND ARE NOT TO BE COPIED OR TRANSMITTED WITHOUT PRIOR WRITTEN CONSENT OF I.A.S. ANY UNAUTHORIZED REPRODUCTION OR USE OF DESIGN INTENT AS ILLUSTRATED IS PROHIBITED WITHOUT THE EXPRESS WRITTEN CONSENT OF I.A.S.

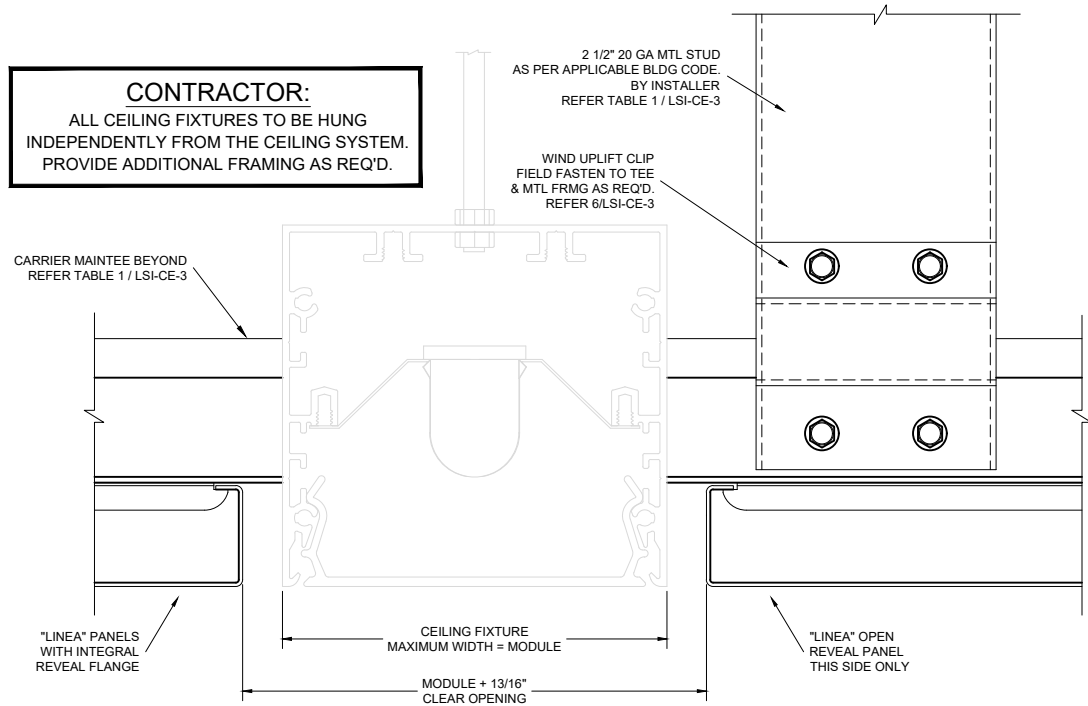


3227 PROGRESS CIRCLE  
MIRA LOMA , CA 91752  
OFFICE: 909-947-3287  
CELL: 626-393-1209  
EMAIL: BRIANKING@INNOVATIVE-AS.NET

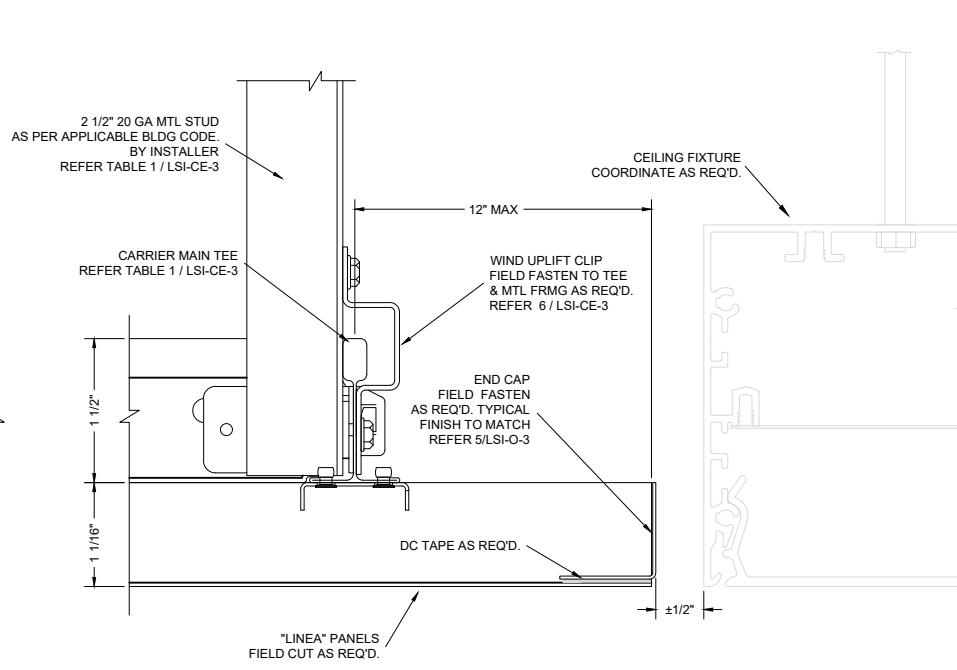
"LINEA" SNAP-IN SYSTEM  
MATERIAL : .040" ALUMINUM  
FINISH : PAINT / WOOD / ANODIZED  
NON-PERFORATED

EXTERIOR CLOSE REVEAL DETAILS I  
DRAWING NUMBER : LSI-CE-2  
SCALE : HALF SIZE

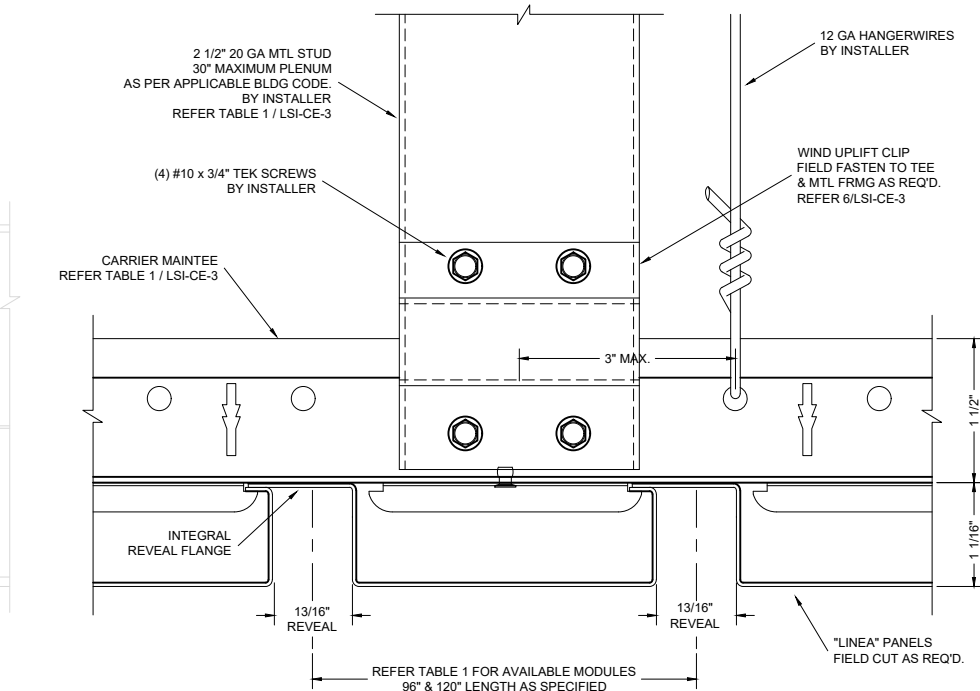
**CONTRACTOR:**  
ALL CEILING FIXTURES TO BE HUNG  
INDEPENDENTLY FROM THE CEILING SYSTEM.  
PROVIDE ADDITIONAL FRAMING AS REQ'D.



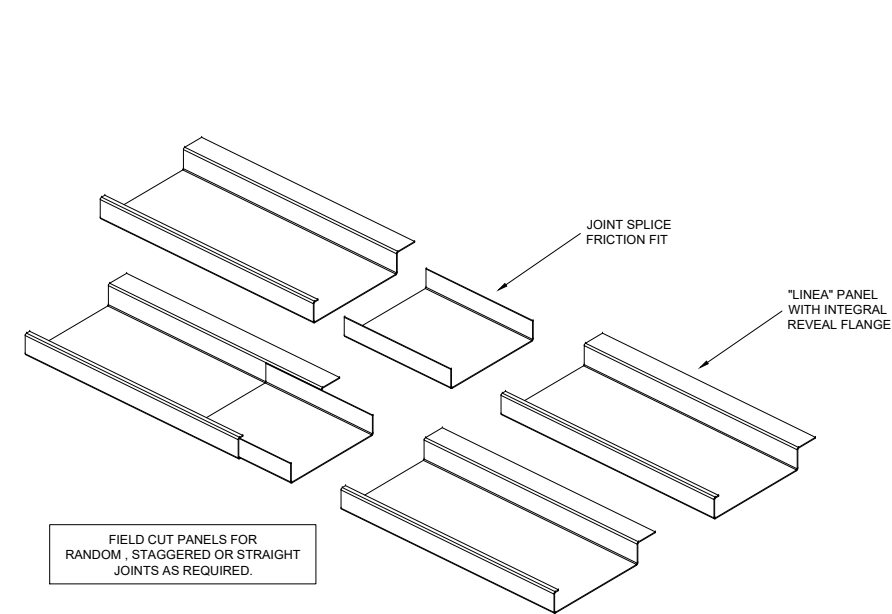
**1** "LINEA" CEILING FIXTURE DETAIL  
SCALE: HALF SIZE



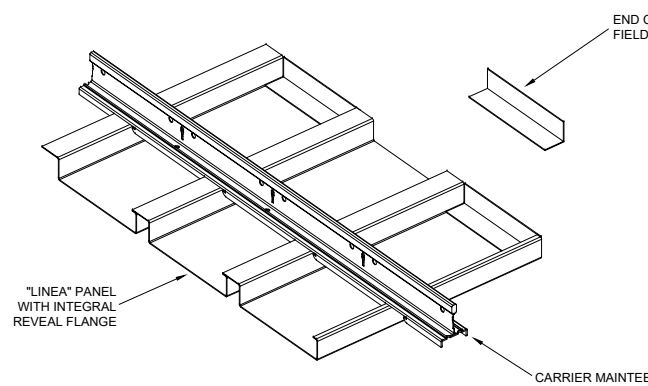
**2** "LINEA" CEILING FIXTURE DETAIL  
SCALE: HALF SIZE



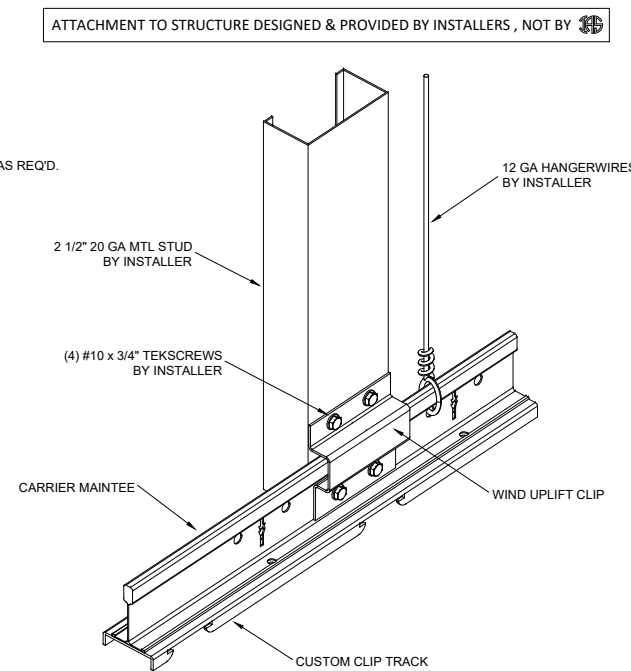
**3** "LINEA" LATERAL BRACING DETAIL  
SCALE: HALF SIZE



**4** "LINEA" JOINT SPLICE ISOMETRIC  
SCALE: N T S



**5** "LINEA" END CAP ISOMETRIC  
SCALE: N T S



**6** CONNECTOR CLIP ISOMETRIC  
SCALE: N T S

**TABLE 1 : DESIGN WIND LOAD**

"LINEA" EXTERIOR CEILING SYSTEM		
Panel Type : .040" Aluminum "Linea"		
Carrier Type : .063" Aluminum / CMC Grid Assembly		
Class Rating	Carrier Maintee Spacing	Compression Post & Cross Tee Spacing
<b>4" Module</b>		
30 (45 PSF)	36"	36"
60 (75 PSF)	36"	24"
90 (105 PSF)	36"	24"
<b>6" Module</b>		
30 (45 PSF)	36"	36"
60 (75 PSF)	36"	24"
90 (105 PSF)	36"	24"
<b>8" Module</b>		
30 (45 PSF)	24"	32"
60 (75 PSF)	24"	32"
90 (105 PSF)	24"	32"
<b>10" Module</b>		
30 (45 PSF)	24"	32"
60 (75 PSF)	24"	32"
90 (105 PSF)	24"	32"
<b>12" Module</b>		
30 (45 PSF)	24"	32"
60 (75 PSF)	24"	32"
90 (105 PSF)	24"	32"

THESE DRAWINGS ARE THE PROPERTY OF I.A.S. AND ARE NOT TO BE COPIED OR TRANSMITTED WITHOUT PRIOR WRITTEN CONSENT OF I.A.S.  
ANY UNAUTHORIZED REPRODUCTION OR USE OF DESIGN INTENT AS ILLUSTRATED IS PROHIBITED WITHOUT THE EXPRESS WRITTEN CONSENT OF I.A.S.



3227 PROGRESS CIRCLE  
MIRA LOMA, CA 91752  
OFFICE: 909-947-3287  
CELL: 626-393-1209  
EMAIL: BRIANKING@INNOVATIVE-AS.NET

"LINEA" SNAP-IN SYSTEM  
MATERIAL : .040" ALUMINUM  
FINISH : PAINT / WOOD / ANODIZED  
NON-PERFORATED

**EXTERIOR CLOSE REVEAL DETAILS II**  
DRAWING NUMBER : LSI-CE-3  
SCALE : AS SHOWN