



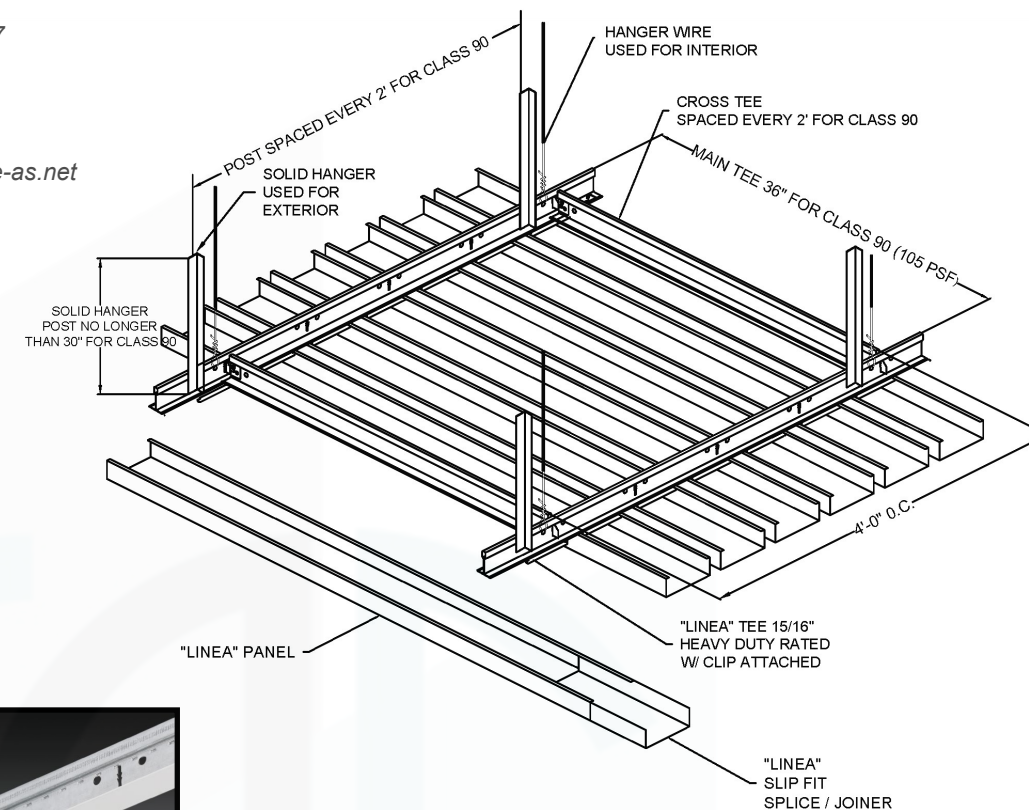
"LINEA" Snap In Strip System



Project: Region 10 ESC Conference Center Renovations/ Richardson, TX

 Office 909-947-3287

 brianking@innovative-as.net



SYSTEM ISOMETRIC



**HEAVY DUTY GRID SYSTEM
SEISMIC ALL ZONES**





The "Linea" Strip Snap In System is one of our most economical ceiling systems and is widely used throughout the decorative acoustical ceiling industry. We can offer a standard quick ship system or a fully custom designed system. We have several panel finish options and several perforation options to choose from. We incorporate a Heavy Duty Rated grid system in our design so all seismic zones and local building codes are met and satisfied.


Information




Standard Module Sizes	4"	6"	8"	10"
Standard Panel Length	8' & 10'			
System Accessibility	No			
Acoustical	Yes	Perforation and Black Soundtex		
Material	Aluminum	.040" Thick recommended for durability		
Suspension	Heavy Duty	15/16" Face -Rated for all seismic zones and ASTM		
Reveal Between Panels	13/16" (.812")	Reveals can be open or closed		

 High NRC available with perforation and acoustical material combinations
Sound Absorption

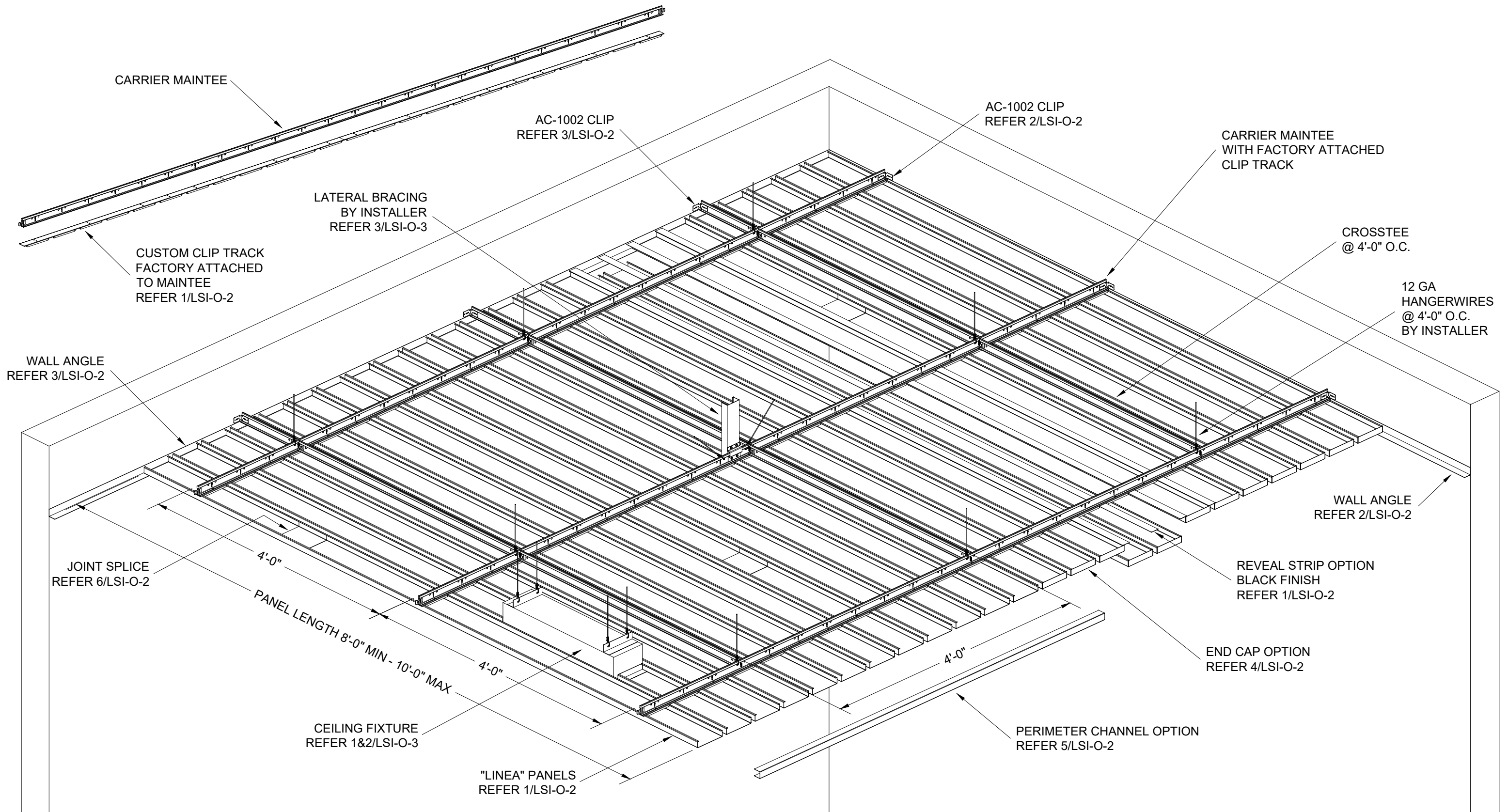
 A wide variety of perforations are available. We have a pattern solution for aesthetics and acoustics
Perforation

 We provide a Heavy Duty Rated grid system that meets all seismic zones and local building codes

 "Slatz" system is produced to meet ASTM 635 / ASTM 636
ASTM E84 / ASTM C423



Green Building



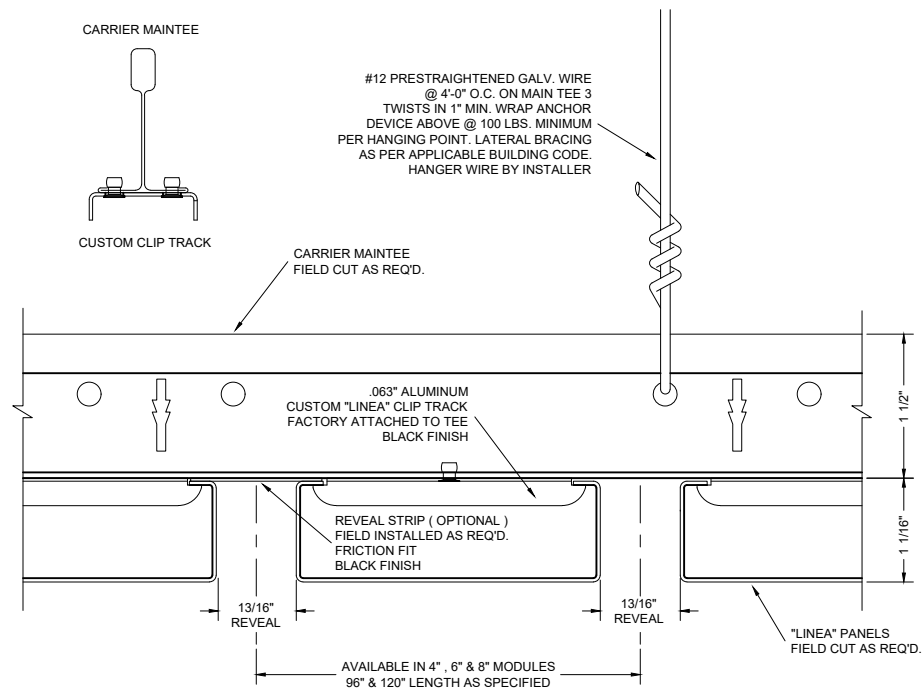
THESE DRAWINGS ARE THE PROPERTY OF I.A.S. AND ARE NOT TO BE COPIED OR TRANSMITTED WITHOUT PRIOR WRITTEN CONSENT OF I.A.S. ANY UNAUTHORIZED REPRODUCTION OR USE OF DESIGN INTENT AS ILLUSTRATED IS PROHIBITED WITHOUT THE EXPRESS WRITTEN CONSENT OF I.A.S.



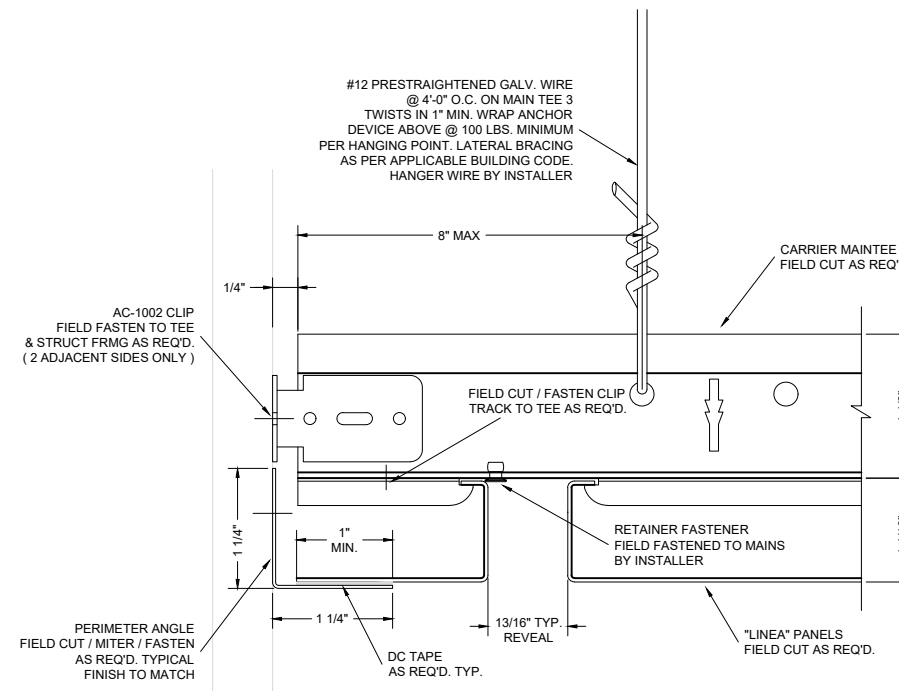
3227 PROGRESS CIRCLE
JURUPA VALLEY, CA 91752
OFFICE: 909-947-3287
CELL: 626-393-1209
EMAIL: BRIANKING@INNOVATIVE-AS.NET

"LINEA" SNAP-IN SYSTEM
MATERIAL : .040" ALUMINUM
FINISH : PAINT / WOOD / ANODIZED
PERFORATED / NON-PERFORATED

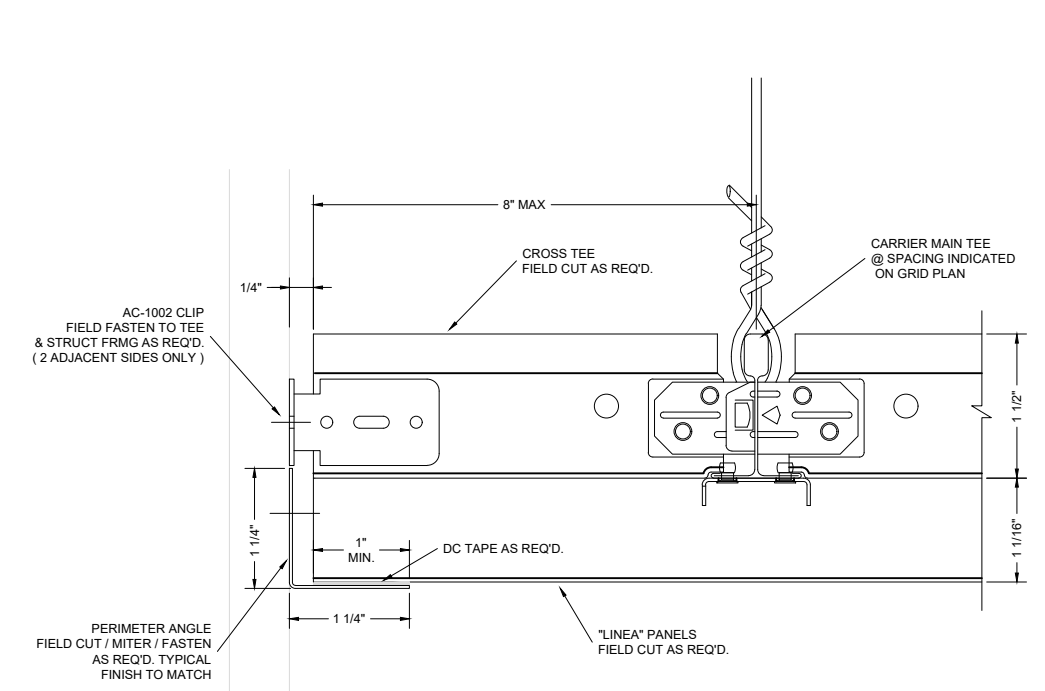
INTERIOR OPEN REVEAL ISOMETRIC VIEW
DRAWING NUMBER : LSI-O-1
SCALE : N T S



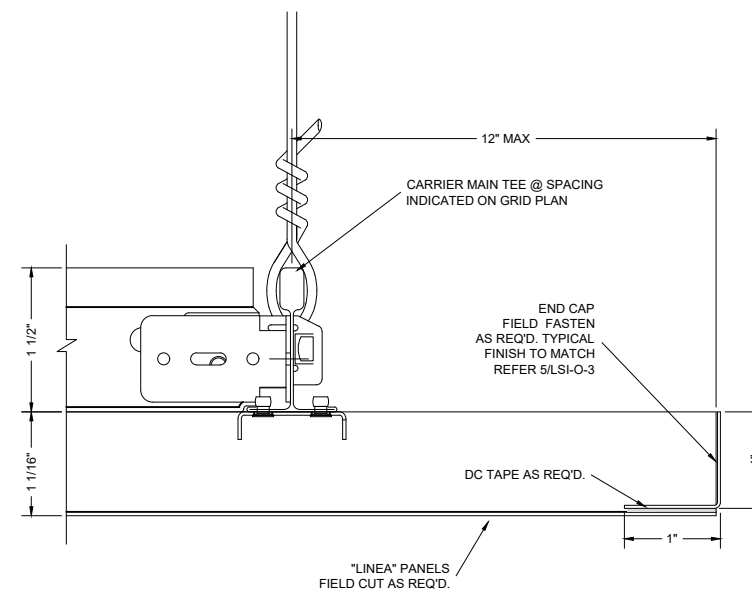
1 "LINEA" PANEL MODULES DETAIL
SCALE: HALF SIZE



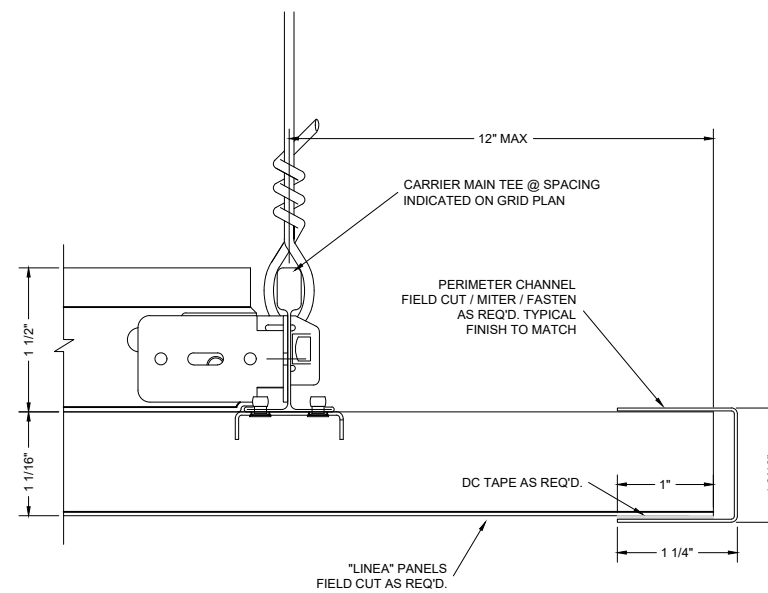
2 "LINEA" PERIMETER DETAIL
SCALE: HALF SIZE



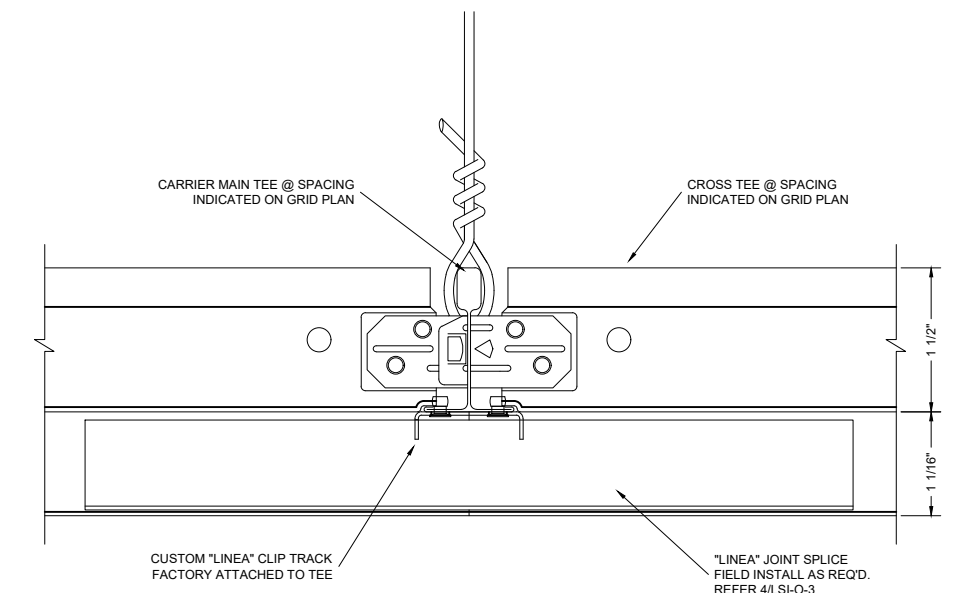
3 "LINEA" PERIMETER DETAIL
SCALE: HALF SIZE



4 "LINEA" END CAP DETAIL
SCALE: HALF SIZE



5 "LINEA" PERIMETER DETAIL
SCALE: HALF SIZE



6 "LINEA" JOINT SPLICE DETAIL
SCALE: HALF SIZE

THESE DRAWINGS ARE THE PROPERTY OF I.A.S. AND ARE NOT TO BE COPIED OR TRANSMITTED WITHOUT PRIOR WRITTEN CONSENT OF I.A.S. ANY UNAUTHORIZED REPRODUCTION OR USE OF DESIGN INTENT AS ILLUSTRATED IS PROHIBITED WITHOUT THE EXPRESS WRITTEN CONSENT OF I.A.S.

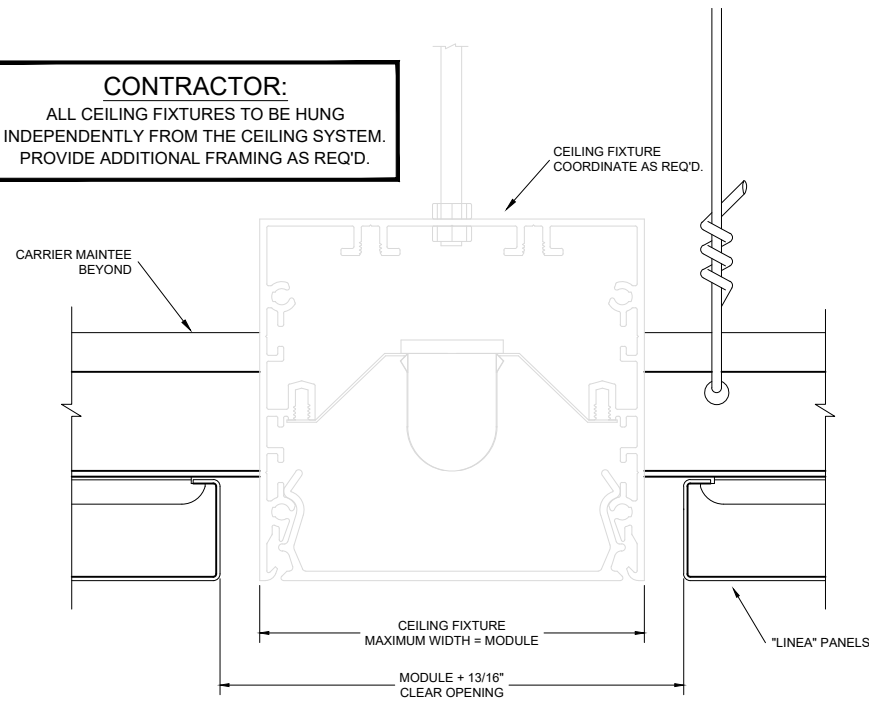


3227 PROGRESS CIRCLE
JURUPA VALLEY, CA 91752
OFFICE: 909-947-3287
CELL: 626-393-1209
EMAIL: BRIANKING@INNOVATIVE-AS.NET

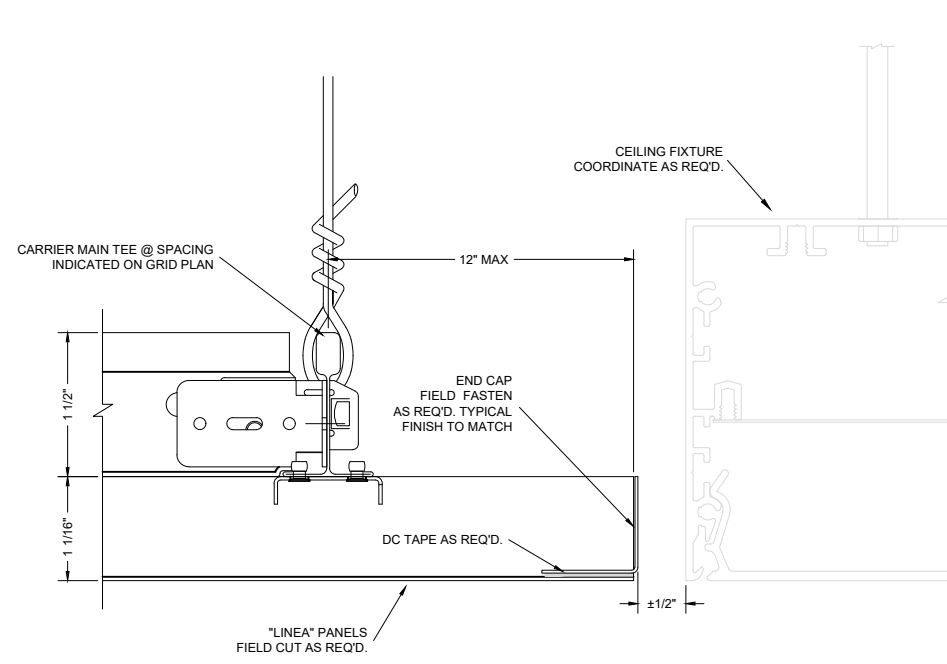
"LINEA" SNAP-IN SYSTEM
MATERIAL : .040" ALUMINUM
FINISH : PAINT / WOOD / ANODIZED
PERFORATED / NON-PERFORATED

INTERIOR OPEN REVEAL TYPICAL DETAILS
DRAWING NUMBER : LSI-O-2
SCALE : HALF SIZE

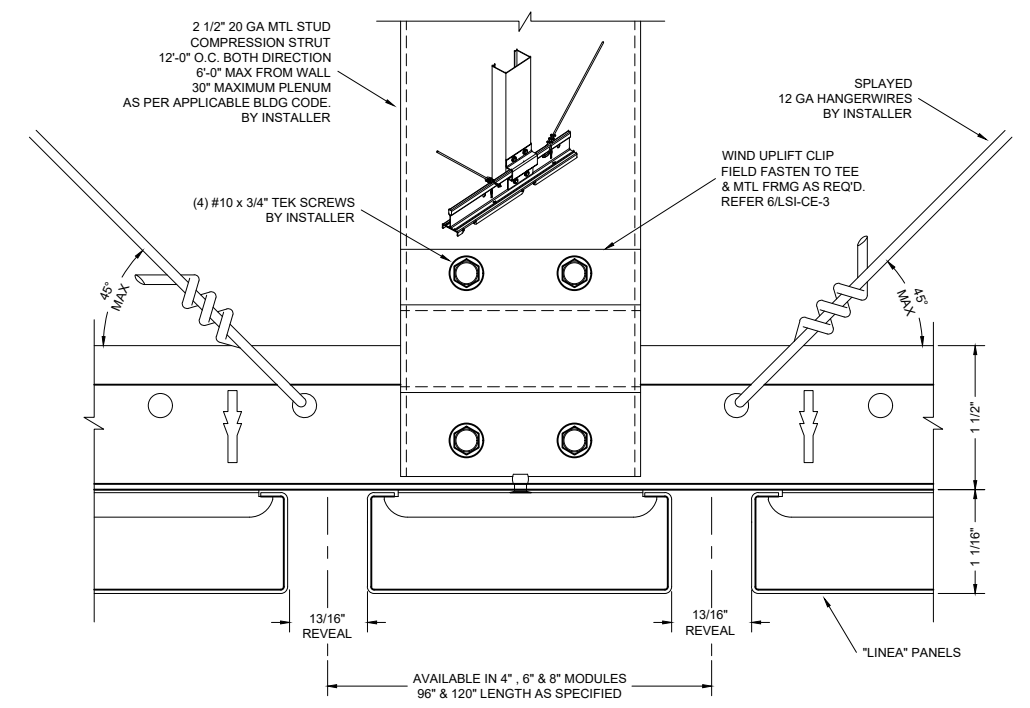
CONTRACTOR:
ALL CEILING FIXTURES TO BE HUNG
INDEPENDENTLY FROM THE CEILING SYSTEM.
PROVIDE ADDITIONAL FRAMING AS REQ'D.



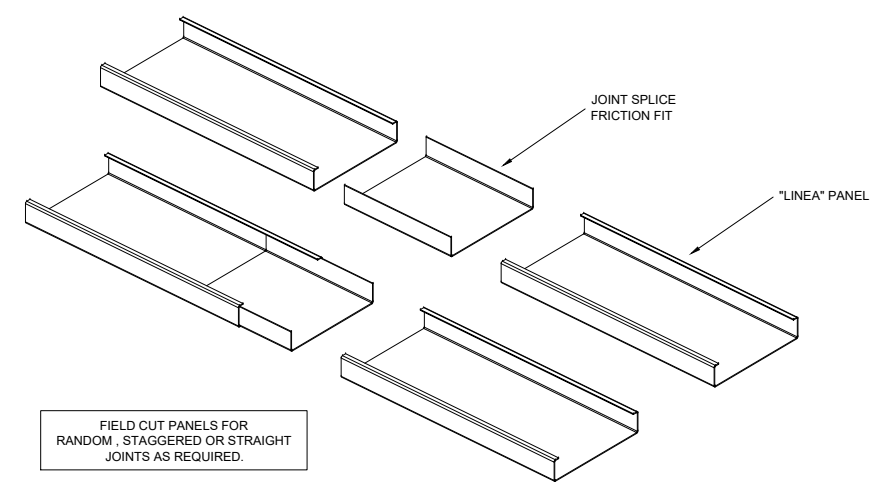
1 "LINEA" CEILING FIXTURE DETAIL
SCALE: HALF SIZE



2 "LINEA" CEILING FIXTURE DETAIL
SCALE: HALF SIZE

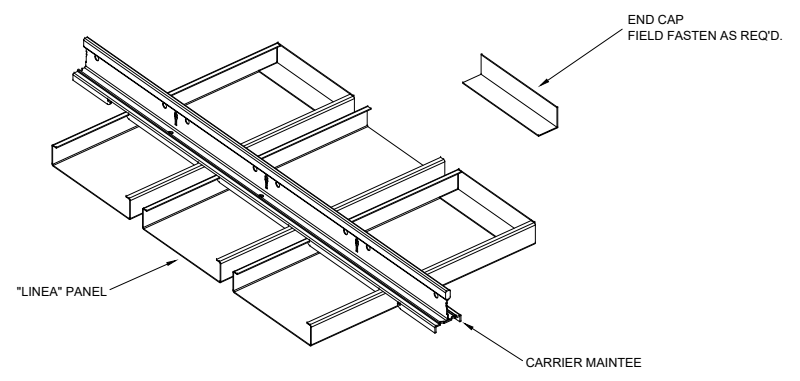


3 "LINEA" LATERAL BRACING DETAIL
SCALE: HALF SIZE

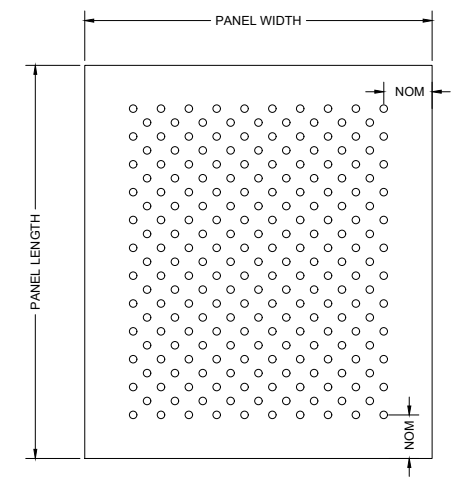


FIELD CUT PANELS FOR
RANDOM, STAGGERED OR STRAIGHT
JOINTS AS REQUIRED.

4 "LINEA" JOINT SPLICE ISOMETRIC
SCALE: N T S



5 "LINEA" END CAP ISOMETRIC
SCALE: N T S



SP-17 PERFORATION
.078" DIA. HOLES @ .205"
DIAGONAL CENTERS
(11% OPEN)

6 "LINEA" STANDARD PERFORATION
SCALE: HALF SIZE
OTHER HOLE SIZES AVAILABLE UPON REQUEST

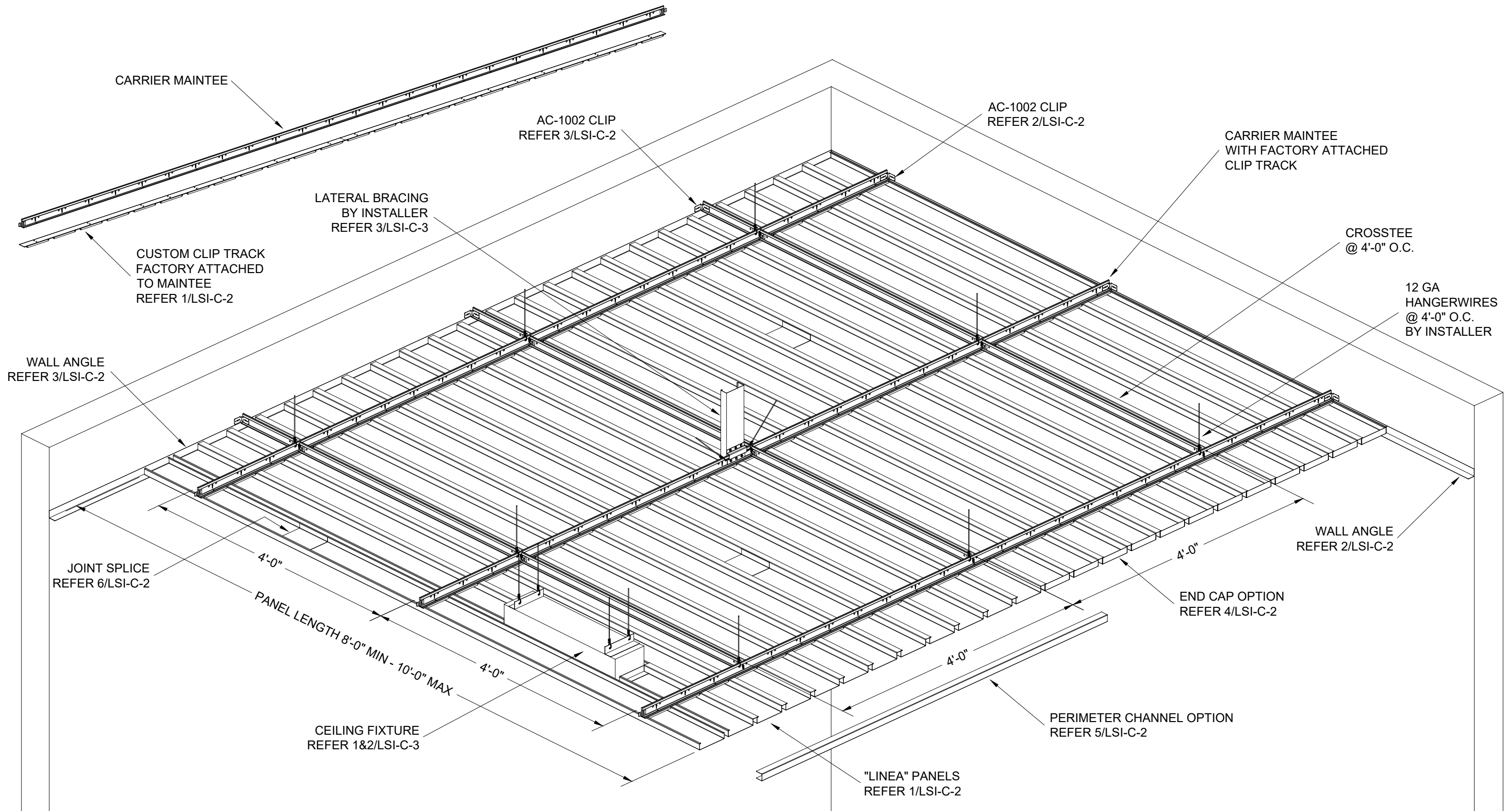
THESE DRAWINGS ARE THE PROPERTY OF I.A.S. AND ARE NOT TO BE COPIED OR TRANSMITTED WITHOUT PRIOR WRITTEN CONSENT OF I.A.S.
ANY UNAUTHORIZED REPRODUCTION OR USE OF DESIGN INTENT AS ILLUSTRATED IS PROHIBITED WITHOUT THE EXPRESS WRITTEN CONSENT OF I.A.S.



3227 PROGRESS CIRCLE
JURUPA VALLEY, CA 91752
OFFICE: 909-947-3287
CELL: 626-393-1209
EMAIL: BRIANKING@INNOVATIVE-AS.NET

"LINEA" SNAP-IN SYSTEM
MATERIAL : .040" ALUMINUM
FINISH : PAINT / WOOD / ANODIZED
PERFORATED / NON-PERFORATED

INTERIOR OPEN REVEAL TYPICAL DETAILS
DRAWING NUMBER : LSI-O-3
SCALE : AS SHOWN



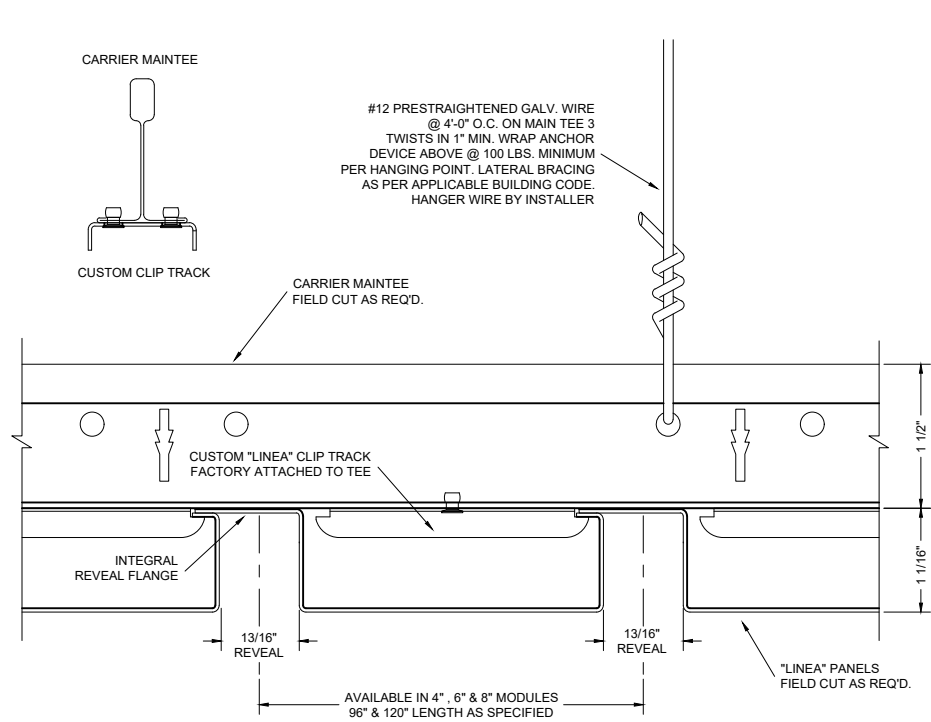
THESE DRAWINGS ARE THE PROPERTY OF I.A.S. AND ARE NOT TO BE COPIED OR TRANSMITTED WITHOUT PRIOR WRITTEN CONSENT OF I.A.S. ANY UNAUTHORIZED REPRODUCTION OR USE OF DESIGN INTENT AS ILLUSTRATED IS PROHIBITED WITHOUT THE EXPRESS WRITTEN CONSENT OF I.A.S.



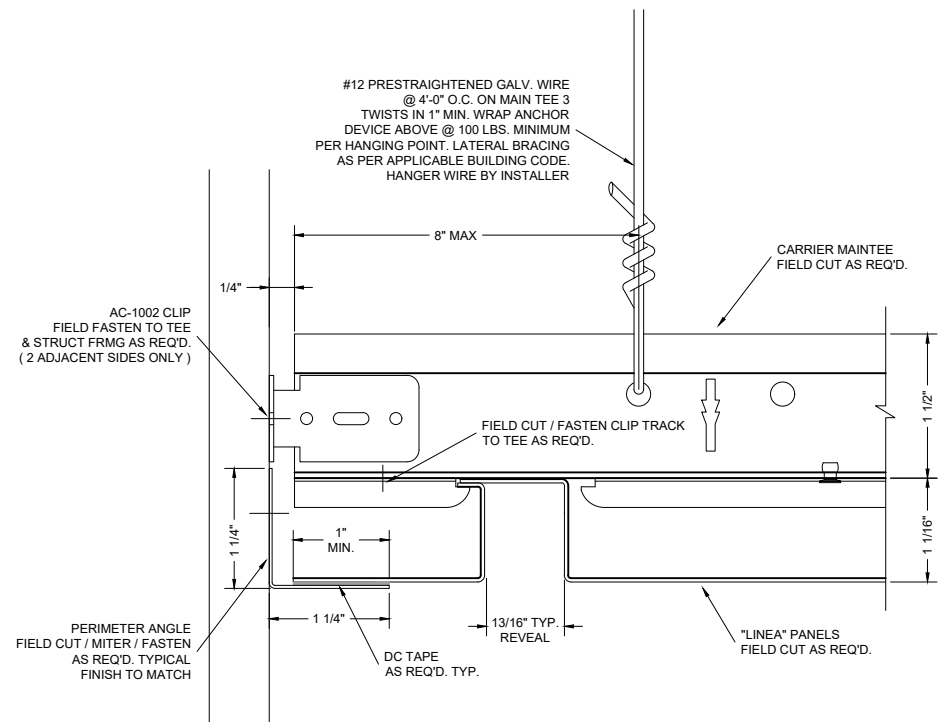
3227 PROGRESS CIRCLE
 MIRA LOMA, CA 91752
 OFFICE: 909-947-3287
 CELL: 626-393-1209
 EMAIL: BRIANKING@INNOVATIVE-AS.NET

"LINEA" SNAP-IN SYSTEM
 MATERIAL : .040" ALUMINUM
 FINISH : PAINT / WOOD / ANODIZED
 PERFORATED / NON-PERFORATED

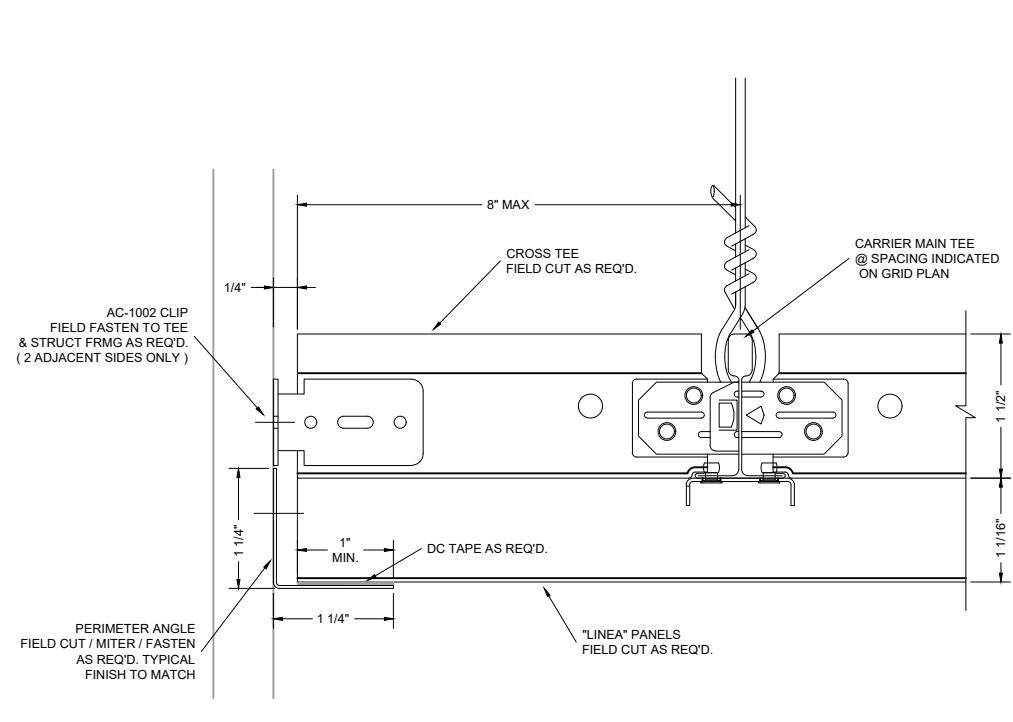
INTERIOR CLOSE REVEAL ISOMETRIC VIEW
 DRAWING NUMBER : LSI-C-1
 SCALE : N T S



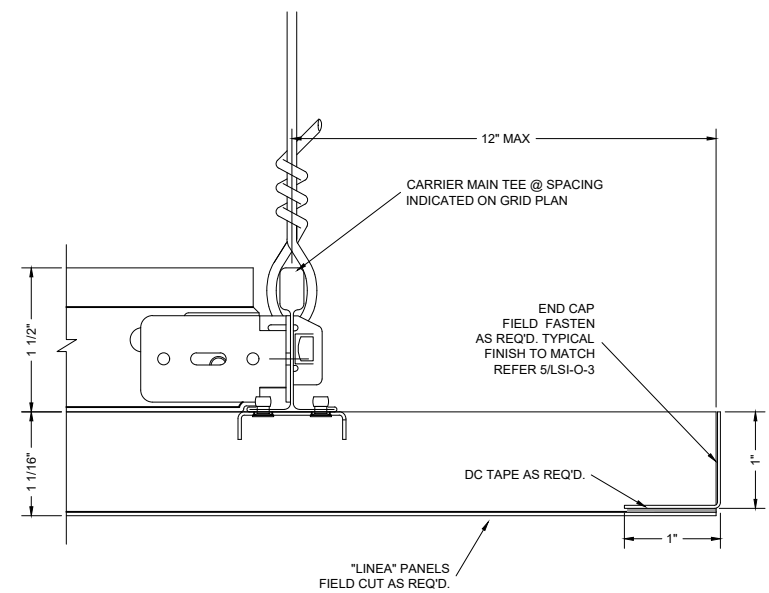
1 "LINEA" PANEL MODULES DETAIL
SCALE: HALF SIZE



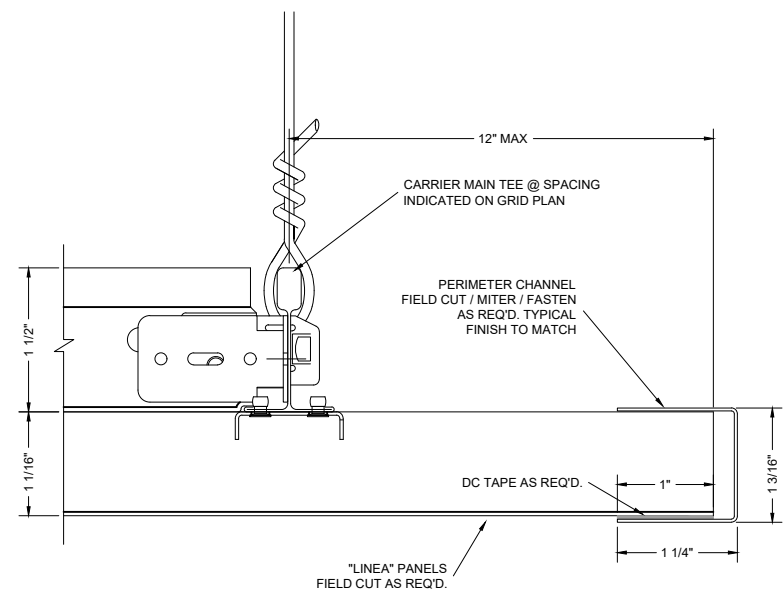
2 "LINEA" PERIMETER DETAIL
SCALE: HALF SIZE



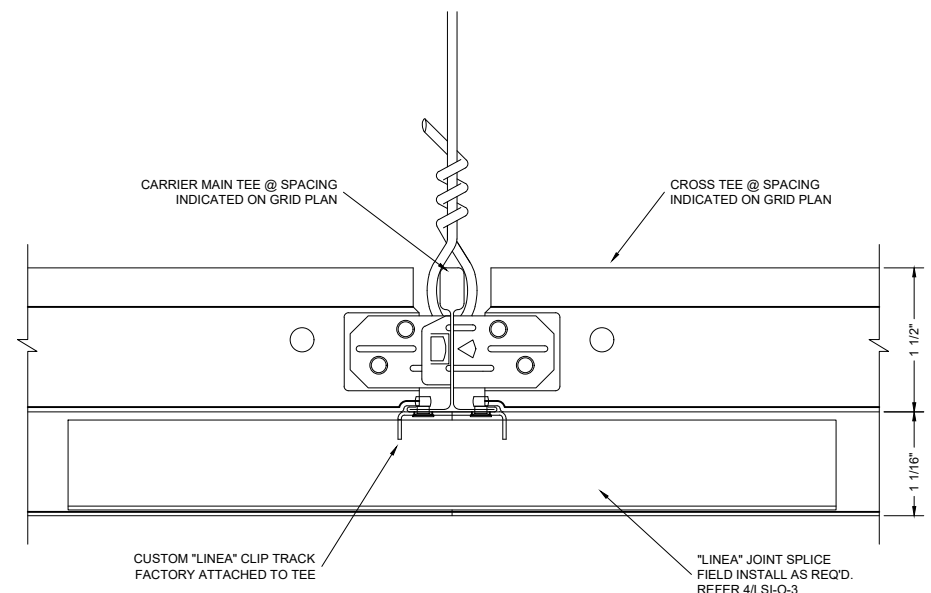
3 "LINEA" PERIMETER DETAIL
SCALE: HALF SIZE



4 "LINEA" END CAP DETAIL
SCALE: HALF SIZE



5 "LINEA" PERIMETER DETAIL
SCALE: HALF SIZE



6 "LINEA" JOINT SPLICE DETAIL
SCALE: HALF SIZE

THESE DRAWINGS ARE THE PROPERTY OF I.A.S. AND ARE NOT TO BE COPIED OR TRANSMITTED WITHOUT PRIOR WRITTEN CONSENT OF I.A.S. ANY UNAUTHORIZED REPRODUCTION OR USE OF DESIGN INTENT AS ILLUSTRATED IS PROHIBITED WITHOUT THE EXPRESS WRITTEN CONSENT OF I.A.S.

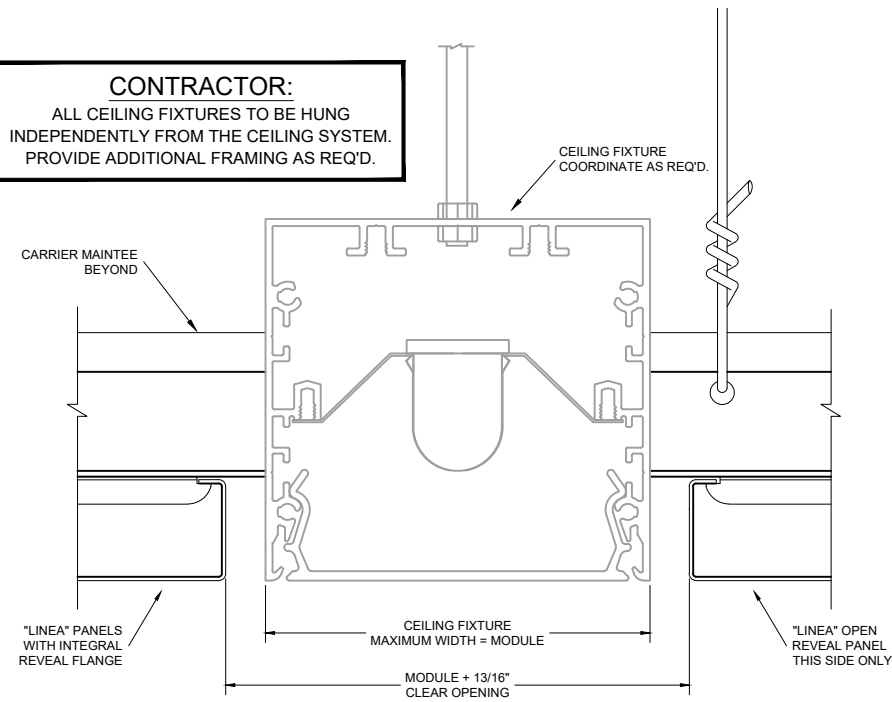


3227 PROGRESS CIRCLE
MIRA LOMA, CA 91752
OFFICE: 909-947-3287
CELL: 626-393-1209
EMAIL: BRIANKING@INNOVATIVE-AS.NET

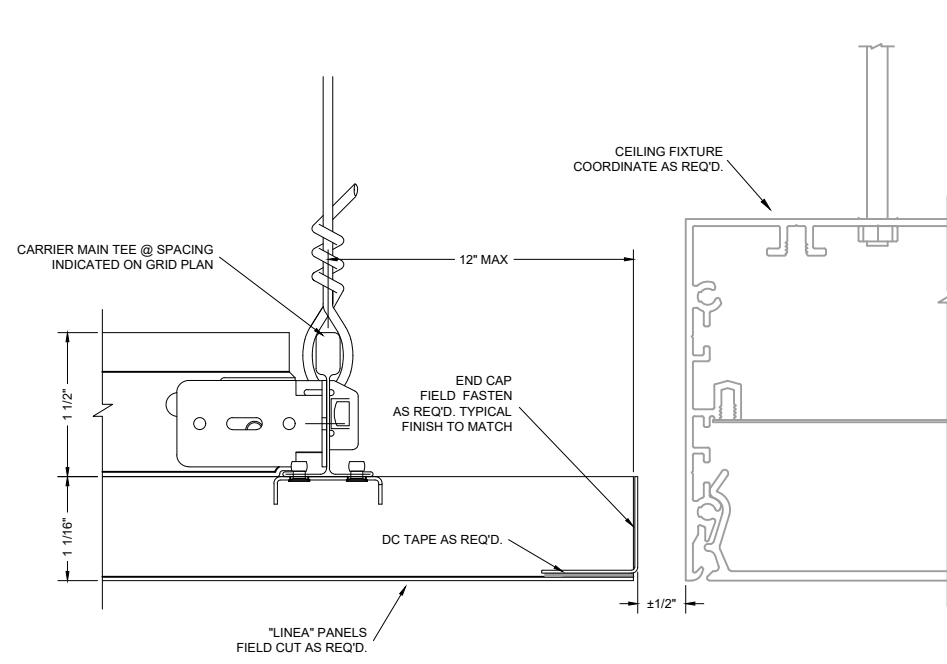
"LINEA" SNAP-IN SYSTEM
MATERIAL : .040" ALUMINUM
FINISH : PAINT / WOOD / ANODIZED
PERFORATED / NON-PERFORATED

INTERIOR CLOSE REVEAL TYPICAL DETAILS
DRAWING NUMBER : LSI-C-2
SCALE : HALF SIZE

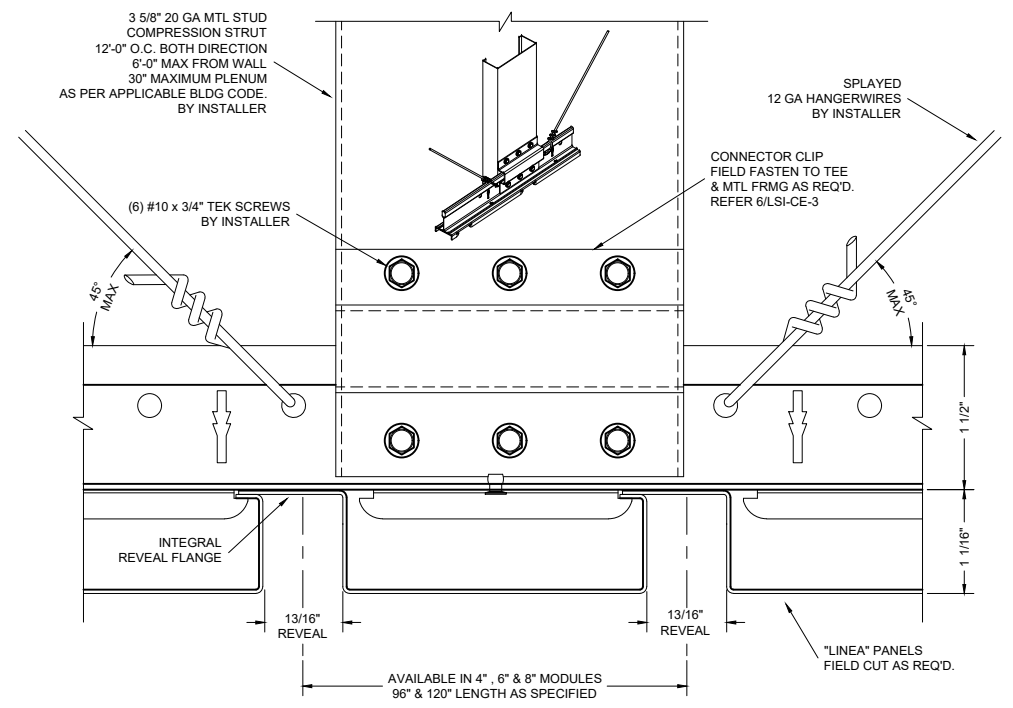
CONTRACTOR:
ALL CEILING FIXTURES TO BE HUNG
INDEPENDENTLY FROM THE CEILING SYSTEM.
PROVIDE ADDITIONAL FRAMING AS REQ'D.



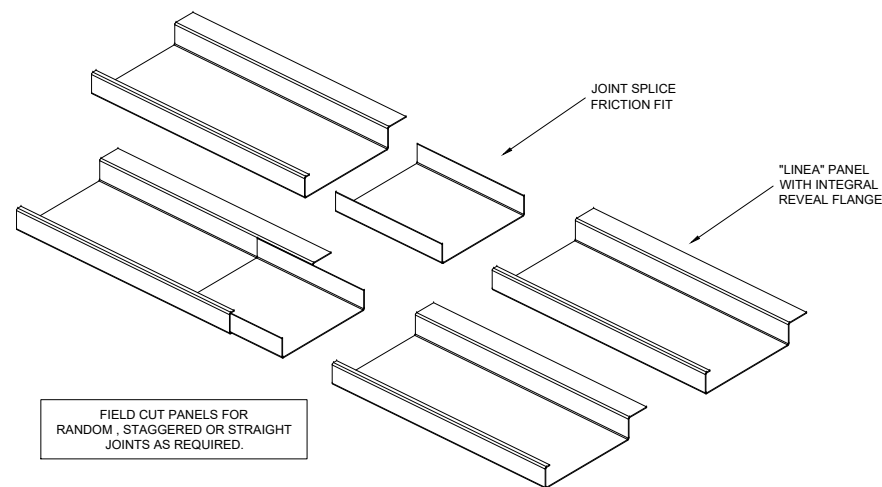
1 "LINEA" CEILING FIXTURE DETAIL
SCALE: HALF SIZE



2 "LINEA" CEILING FIXTURE DETAIL
SCALE: HALF SIZE

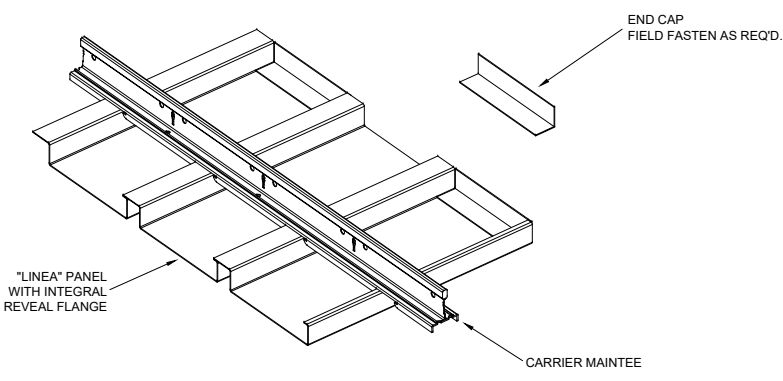


3 "LINEA" LATERAL BRACING DETAIL
SCALE: HALF SIZE



FIELD CUT PANELS FOR
RANDOM, STAGGERED OR STRAIGHT
JOINTS AS REQUIRED.

4 "LINEA" JOINT SPLICE ISOMETRIC
SCALE: N T S



5 "LINEA" END CAP ISOMETRIC
SCALE: N T S

THESE DRAWINGS ARE THE PROPERTY OF I.A.S. AND ARE NOT TO BE COPIED OR TRANSMITTED WITHOUT PRIOR WRITTEN CONSENT OF I.A.S.
ANY UNAUTHORIZED REPRODUCTION OR USE OF DESIGN INTENT AS ILLUSTRATED IS PROHIBITED WITHOUT THE EXPRESS WRITTEN CONSENT OF I.A.S.



3227 PROGRESS CIRCLE
MIRA LOMA, CA 91752
OFFICE: 909-947-3287
CELL: 626-393-1209
EMAIL: BRIANKING@INNOVATIVE-AS.NET

"LINEA" SNAP-IN SYSTEM
MATERIAL : .040" ALUMINUM
FINISH : PAINT / WOOD / ANODIZED
PERFORATED / NON-PERFORATED

INTERIOR CLOSE REVEAL TYPICAL DETAILS
DRAWING NUMBER : LSI-C-3
SCALE : AS SHOWN