

# "PALISADE" Wall Form System



Project: Cal State San Bernardino Extended Learning Expansion



Project: PMRG / Orange, CA



Typically panels are made from thin gauged aluminum. .063" thickness is the preferred thickness. Panel shapes are mainly designed and fabricated square or rectangular. Custom shapes can be designed and fabricated as well. Flange depth typically range from 1 1/2"-2" to accommodate insulation when needed. Wall panels can be designed for Direct Mount, Z Rail, or Slotted Hat Channel depending on application or specifications.

## Information



A wide variety of perforations are available. We have a pattern solution for aesthetics and acoustics

### Perforation



High NRC available with perforation and acoustical material combinations

### Sound Absorption



We provide a Heavy Duty Rated grid system that meets all seismic zones and local building codes



"Palisade" system is produced to meet

ASTM 635 / ASTM 636  
ASTM E84 / ASTM C423



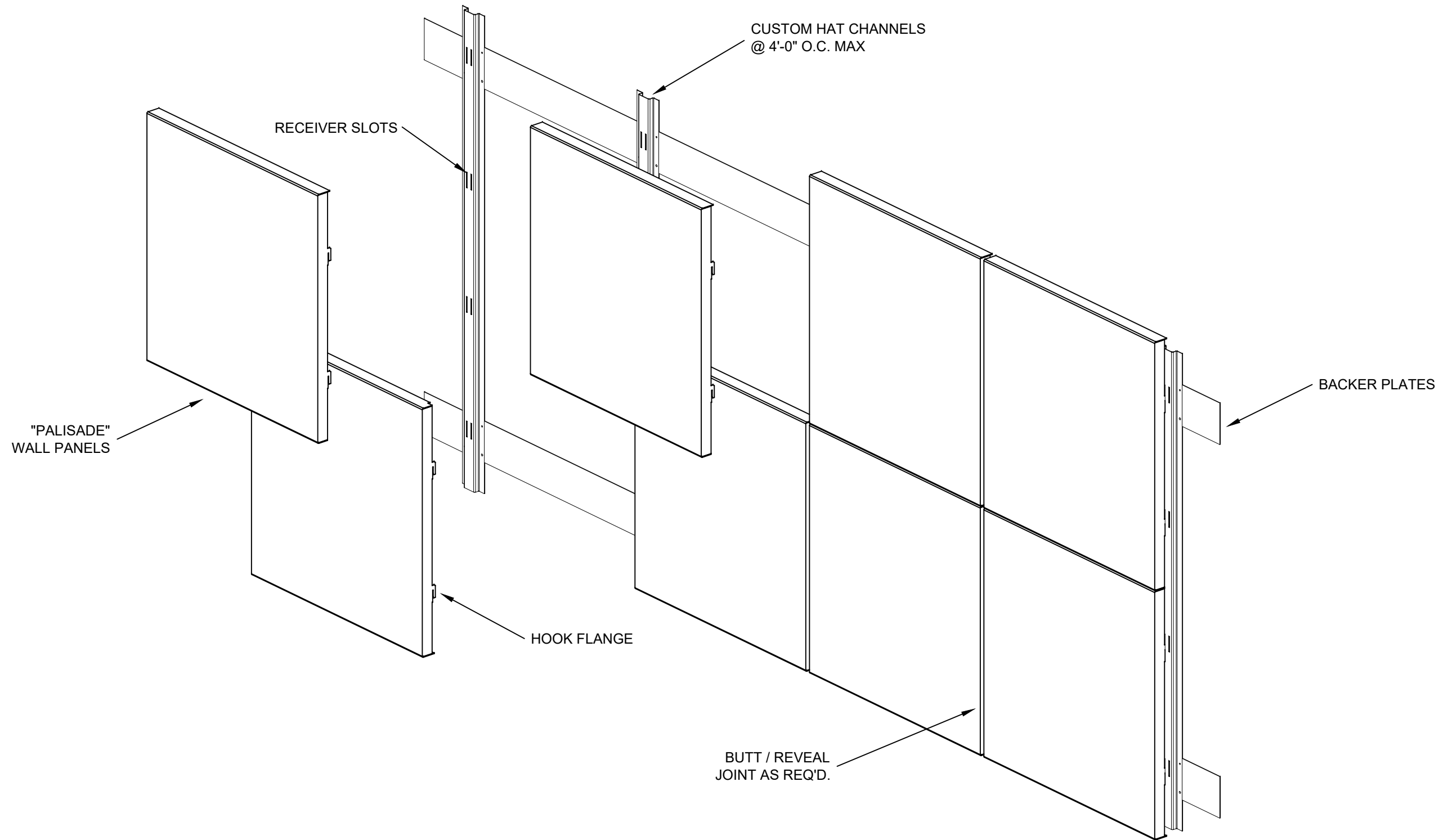
brianking@innovative-as.net



Office- 909-947-3287  
Cell- 626-393-1209





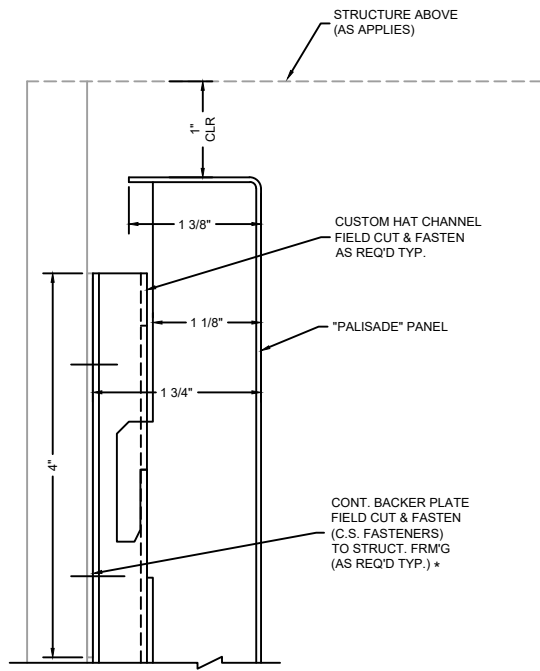


3227 PROGRESS CIRCLE  
 JURUPA VALLEY, CA 91752  
 OFFICE: 909-947-3287  
 CELL: 626-393-1209  
 EMAIL: BRIANKING@INNOVATIVE-AS.NET

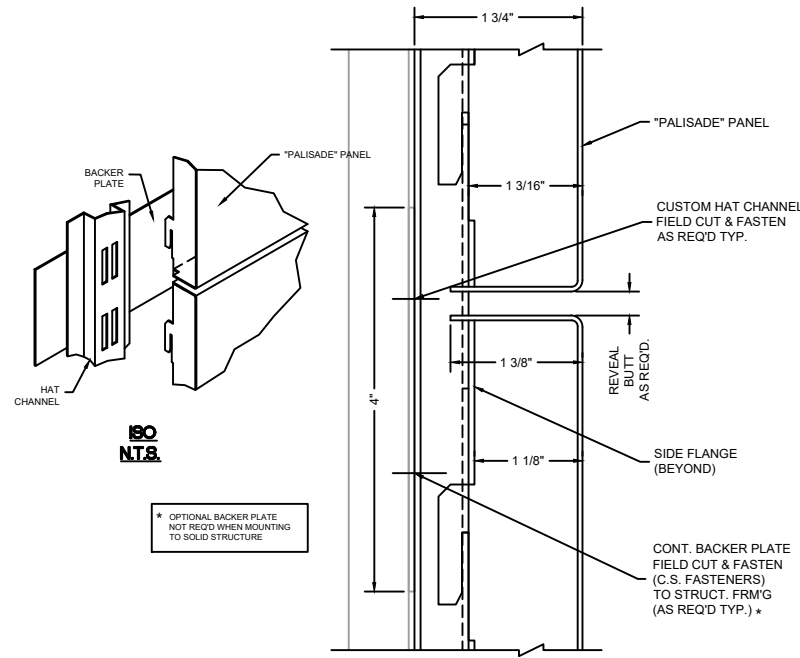
"PALISADE" HOOK CHANNEL  
 MATERIAL : .040" / .063" ALUMINUM  
 FINISH : PAINT / WOOD / ANODIZED  
 PERFORATED / NON-PERFORATED

## GENERIC ISOMETRIC VIEW

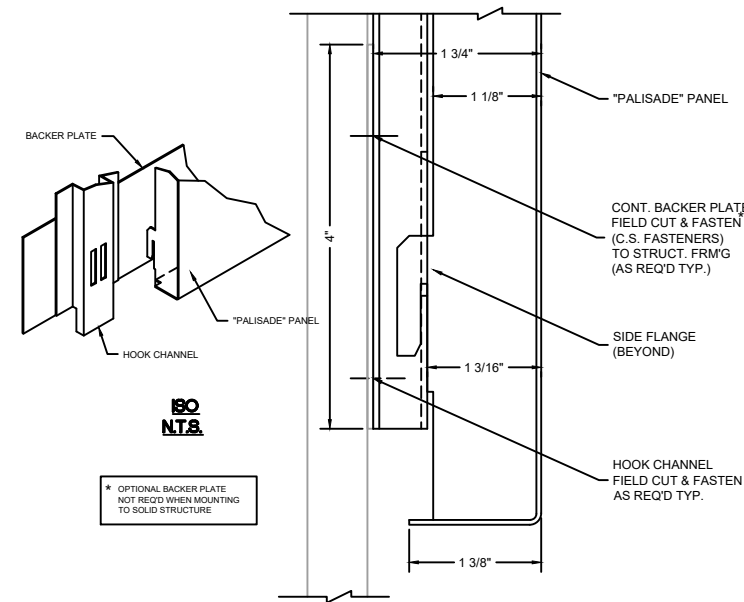
THESE DRAWINGS ARE THE PROPERTY OF I.A.S. AND ARE NOT TO BE COPIED OR TRANSMITTED WITHOUT PRIOR WRITTEN CONSENT OF I.A.S.  
 ANY UNAUTHORIZED REPRODUCTION OR USE OF DESIGN INTENT AS ILLUSTRATED IS PROHIBITED WITHOUT THE EXPRESS WRITTEN CONSENT OF I.A.S.



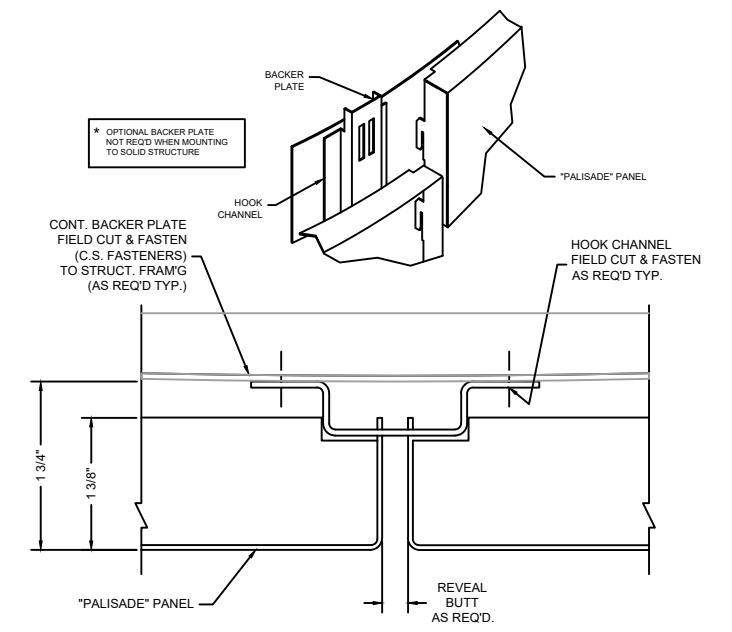
**1** "PALISADE" TOP DETAIL  
SCALE: HALF SIZE



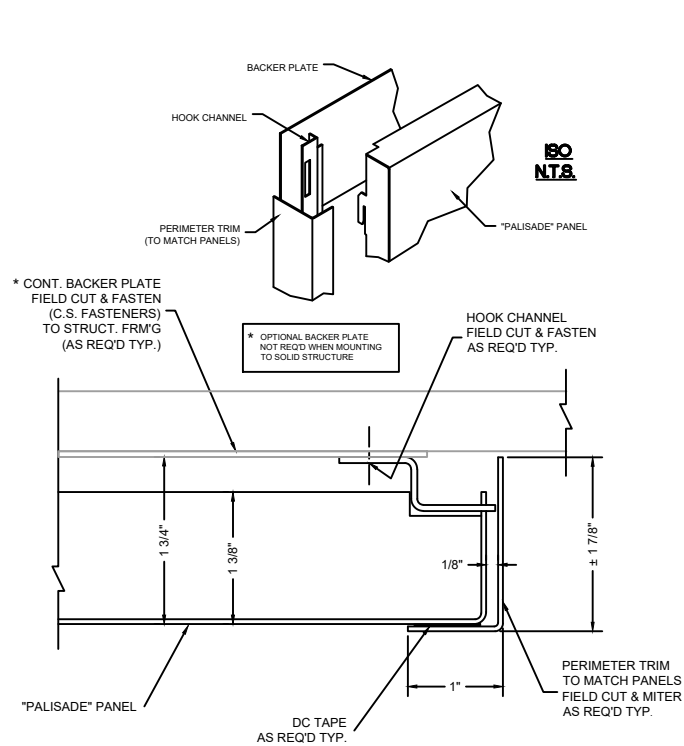
**2** "PALISADE" HORIZONTAL JOINT DETAIL  
SCALE: HALF SIZE



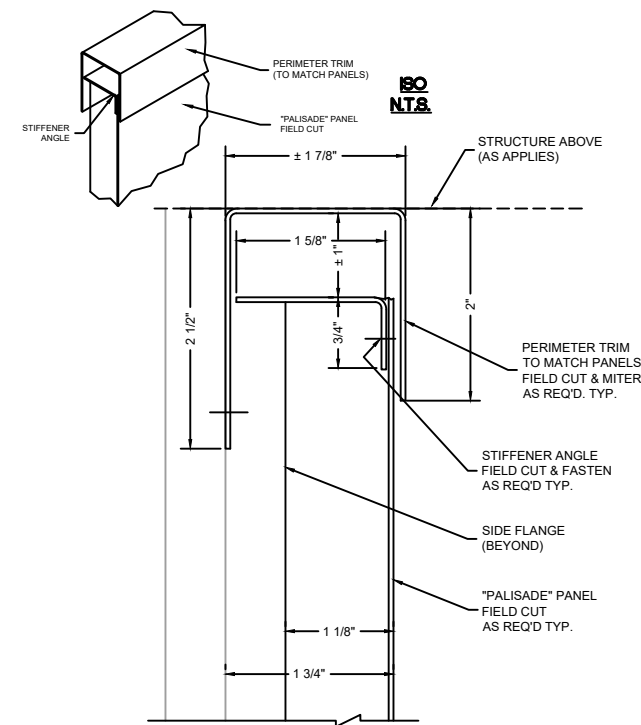
**3** "PALISADE" BOTTOM DETAIL  
SCALE: HALF SIZE



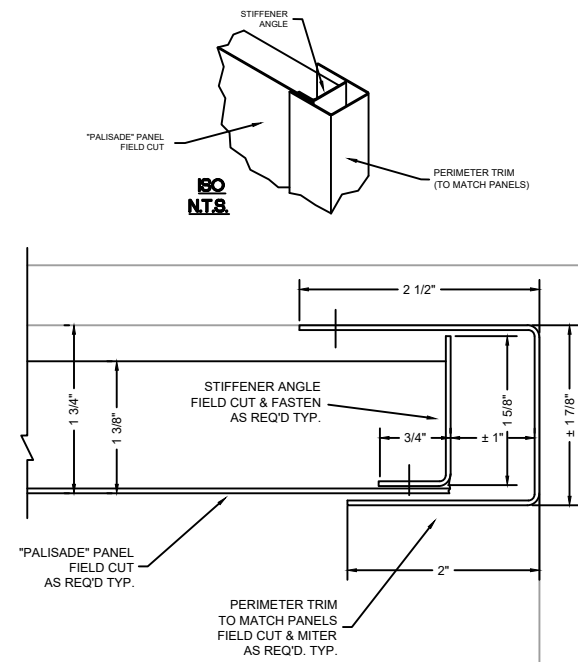
**4** "PALISADE" VERTICAL JOINT DETAIL  
SCALE: HALF SIZE



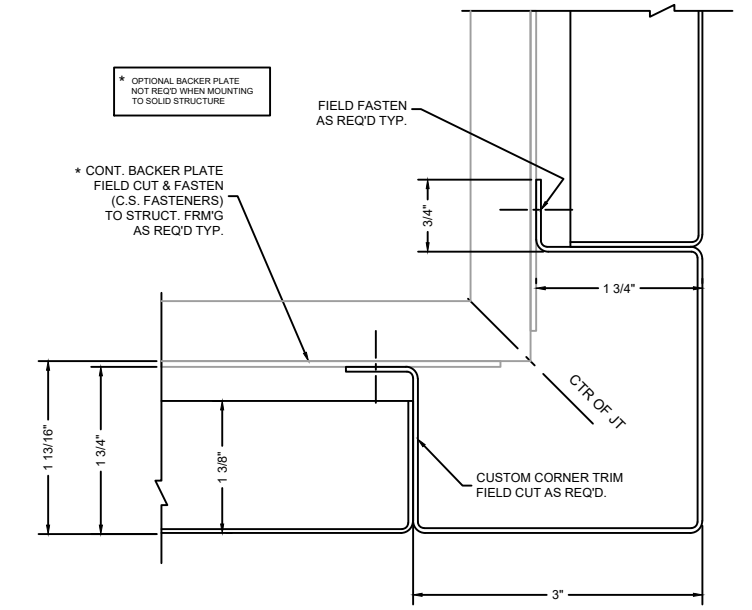
**5** "PALISADE" SIDE DETAIL  
SCALE: HALF SIZE



**6** "PALISADE" TOP TRIM DETAIL  
SCALE: HALF SIZE



**7** "PALISADE" SIDE TRIM DETAIL  
SCALE: HALF SIZE



**8** "PALISADE" CORNER TRIM DETAIL  
SCALE: HALF SIZE

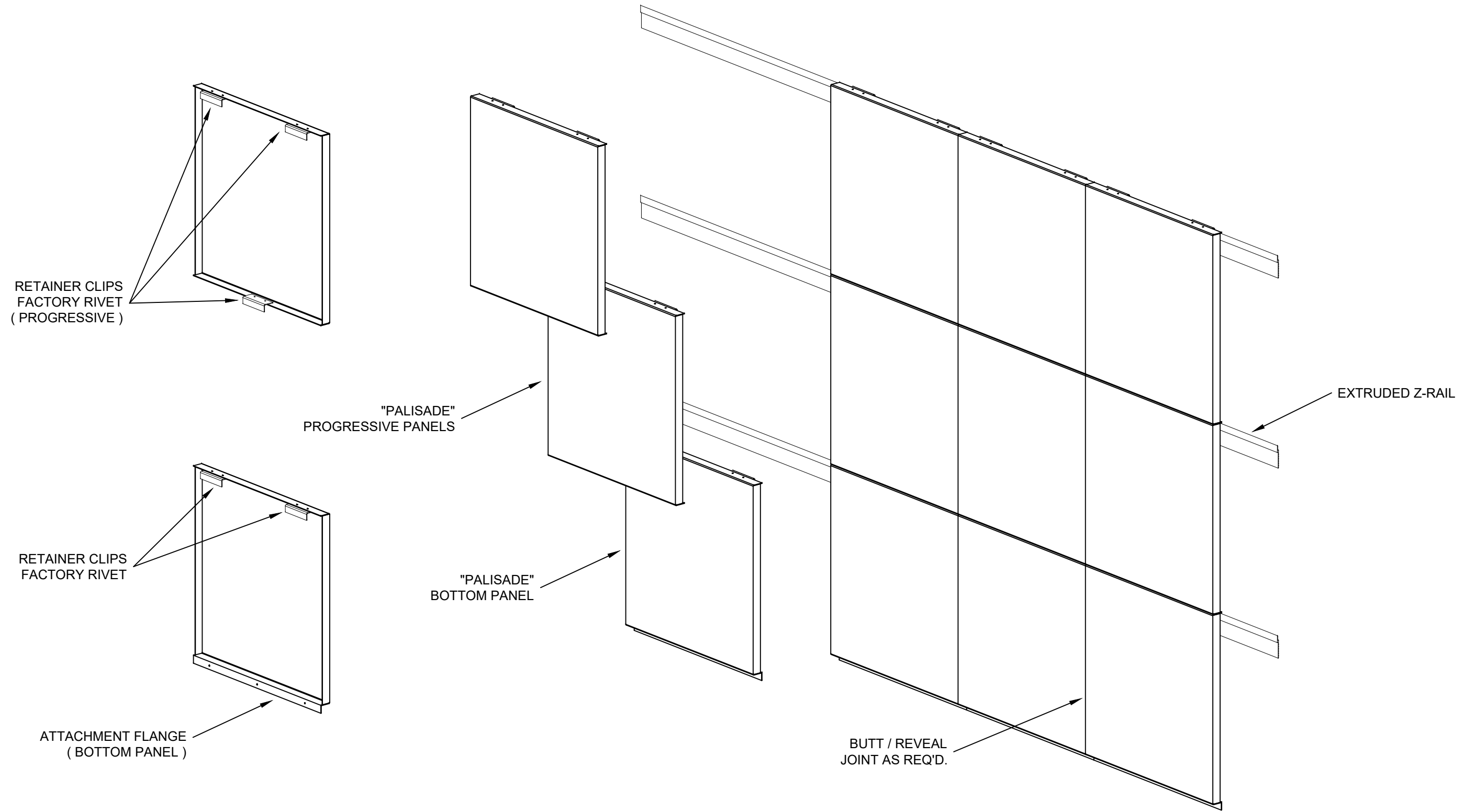


3227 PROGRESS CIRCLE  
JURUPA VALLEY, CA 91752  
OFFICE: 909-947-3287  
CELL: 626-393-1209  
EMAIL: BRIANKING@INNOVATIVE-AS.NET

"PALISADE" HOOK CHANNEL  
MATERIAL : .040" / .063" ALUMINUM  
FINISH : PAINT / WOOD / ANODIZED  
PERFORATED / NON-PERFORATED

## "PALISADE" HOOK CHANNEL DETAILS

THESE DRAWINGS ARE THE PROPERTY OF I.A.S. AND ARE NOT TO BE COPIED OR TRANSMITTED WITHOUT PRIOR WRITTEN CONSENT OF I.A.S. ANY UNAUTHORIZED REPRODUCTION OR USE OF DESIGN INTENT AS ILLUSTRATED IS PROHIBITED WITHOUT THE EXPRESS WRITTEN CONSENT OF I.A.S.

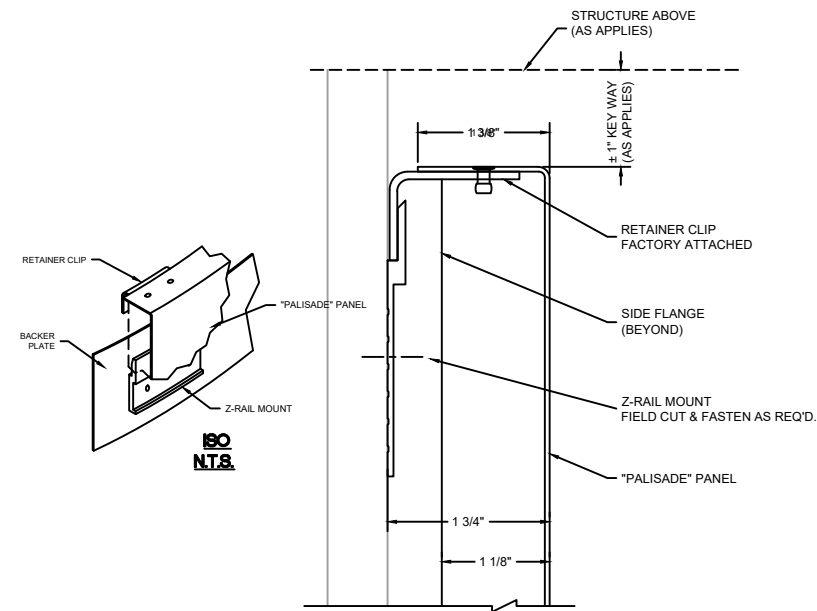


3227 PROGRESS CIRCLE  
 JURUPA VALLEY, CA 91752  
 OFFICE: 909-947-3287  
 CELL: 626-393-1209  
 EMAIL: BRIANKING@INNOVATIVE-AS.NET

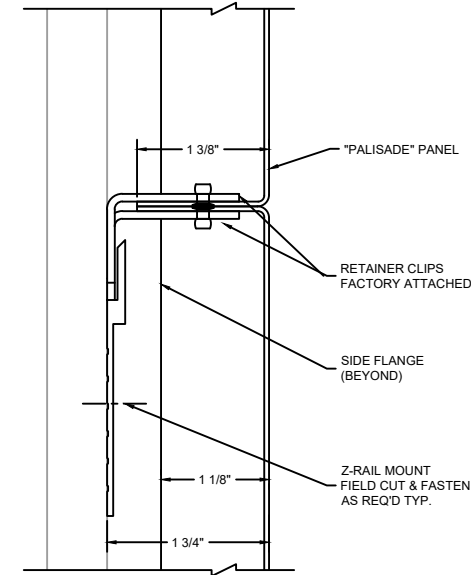
"PALISADE" Z-RAIL MOUNT  
 MATERIAL : .040" / .063" ALUMINUM  
 FINISH : PAINT / WOOD / ANODIZED  
 PERFORATED / NON-PERFORATED

## GENERIC ISOMETRIC VIEW

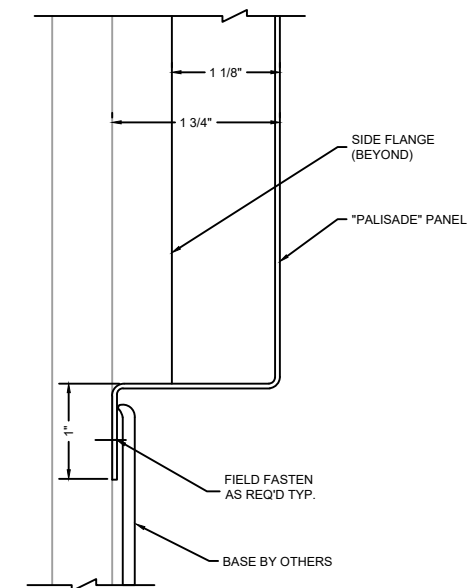
THESE DRAWINGS ARE THE PROPERTY OF I.A.S. AND ARE NOT TO BE COPIED OR TRANSMITTED WITHOUT PRIOR WRITTEN CONSENT OF I.A.S. ANY UNAUTHORIZED REPRODUCTION OR USE OF DESIGN INTENT AS ILLUSTRATED IS PROHIBITED WITHOUT THE EXPRESS WRITTEN CONSENT OF I.A.S.



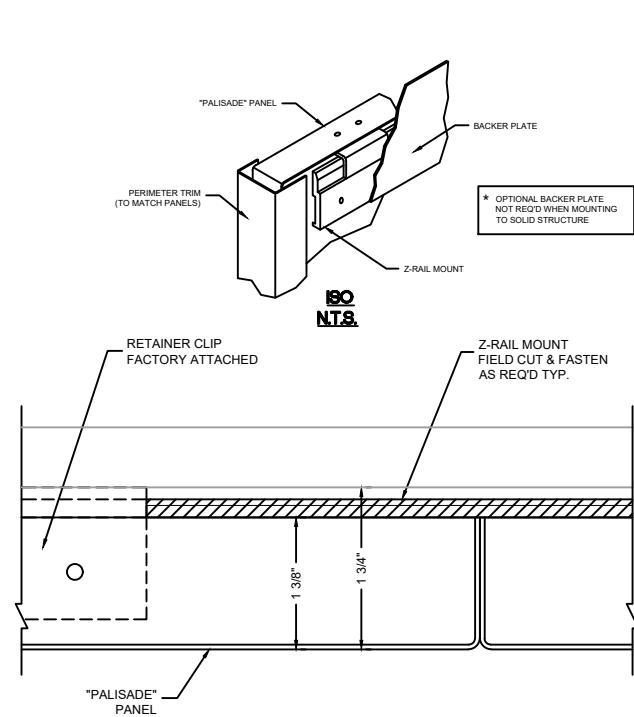
**1** "PALISADE" TOP DETAIL  
SCALE: HALF SIZE



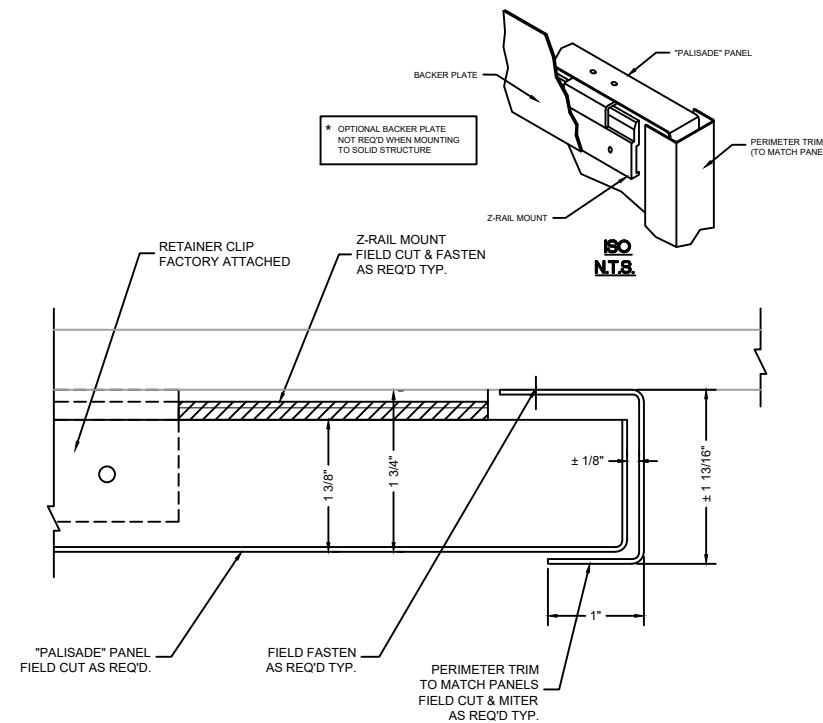
**2** "PALISADE" HORIZONTAL JOINT DETAIL  
SCALE: HALF SIZE



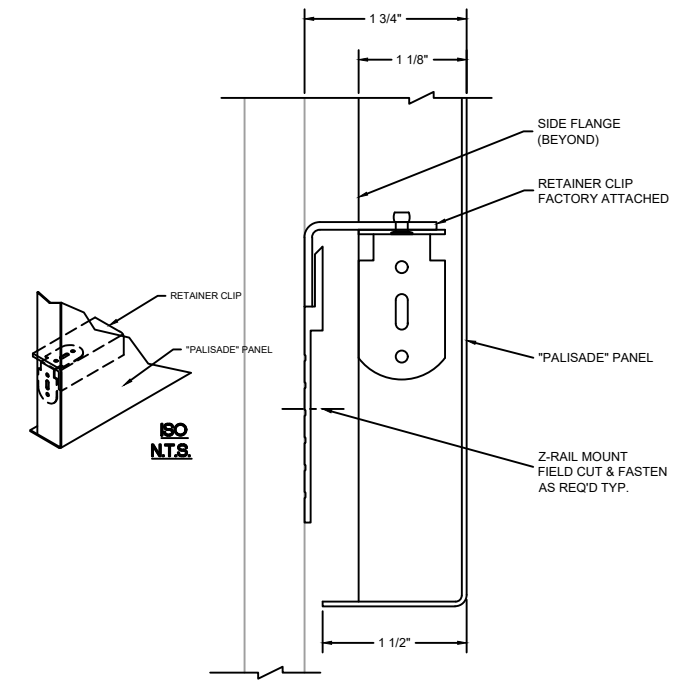
**3** "PALISADE" BOTTOM DETAIL  
SCALE: HALF SIZE



**4** "PALISADE" VERTICAL JOINT DETAIL  
SCALE: HALF SIZE



**5** "PALISADE" SIDE TRIM DETAIL  
SCALE: HALF SIZE



**6** "PALISADE" EXPOSED BOTTOM DETAIL  
SCALE: HALF SIZE

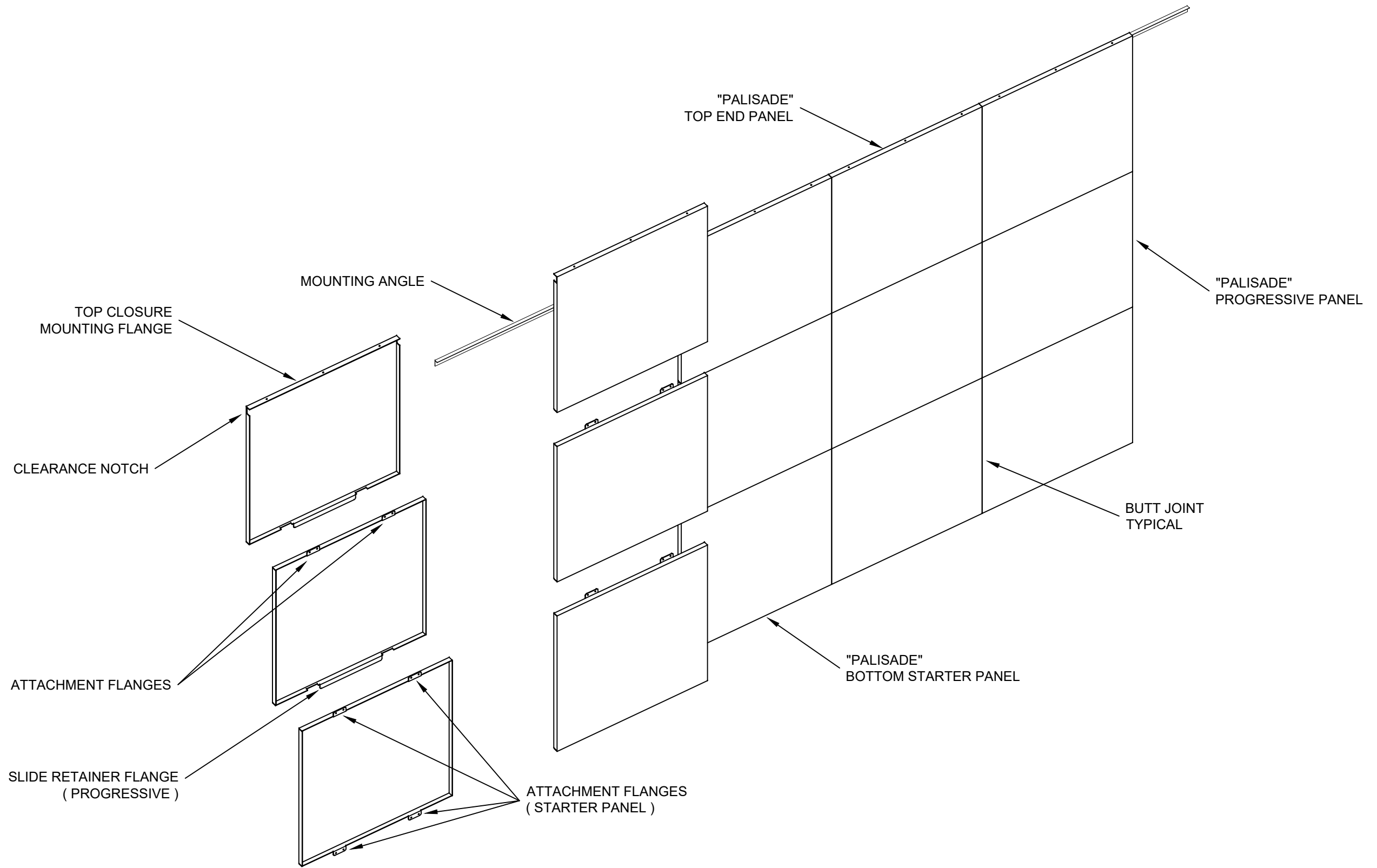


3227 PROGRESS CIRCLE  
JURUPA VALLEY, CA 91752  
OFFICE: 909-947-3287  
CELL: 626-393-1209  
EMAIL: BRIANKING@INNOVATIVE-AS.NET

"PALISADE" Z-RAIL MOUNT  
MATERIAL : .040" / .063" ALUMINUM  
FINISH : PAINT / WOOD / ANODIZED  
PERFORATED / NON-PERFORATED

## "PALISADE" Z-RAIL MOUNT DETAILS

THESE DRAWINGS ARE THE PROPERTY OF I.A.S. AND ARE NOT TO BE COPIED OR TRANSMITTED WITHOUT PRIOR WRITTEN CONSENT OF I.A.S. ANY UNAUTHORIZED REPRODUCTION OR USE OF DESIGN INTENT AS ILLUSTRATED IS PROHIBITED WITHOUT THE EXPRESS WRITTEN CONSENT OF I.A.S.

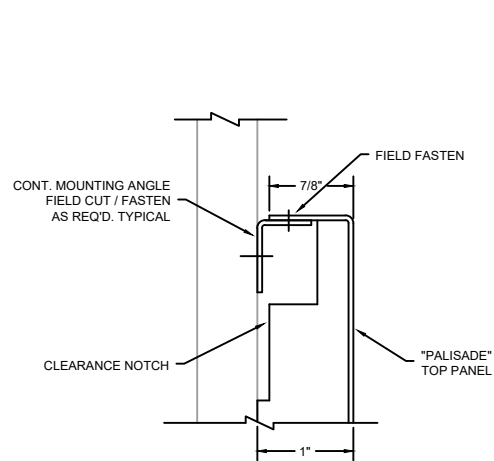


3227 PROGRESS CIRCLE  
 JURUPA VALLEY, CA 91752  
 OFFICE: 909-947-3287  
 CELL: 626-393-1209  
 EMAIL: BRIANKING@INNOVATIVE-AS.NET

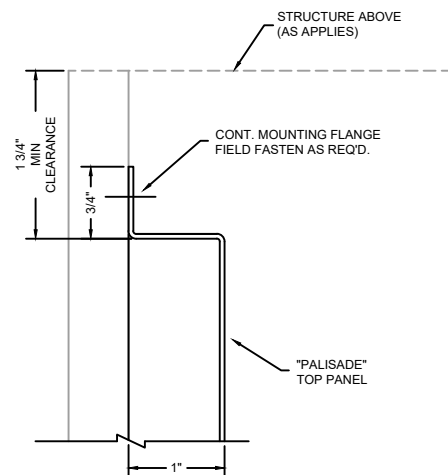
"PALISADE" ZIPPER SYSTEM  
 MATERIAL : .040" / .063" ALUMINUM  
 FINISH : PAINT / WOOD / ANODIZED  
 PERFORATED / NON-PERFORATED

## GENERIC ISOMETRIC VIEW

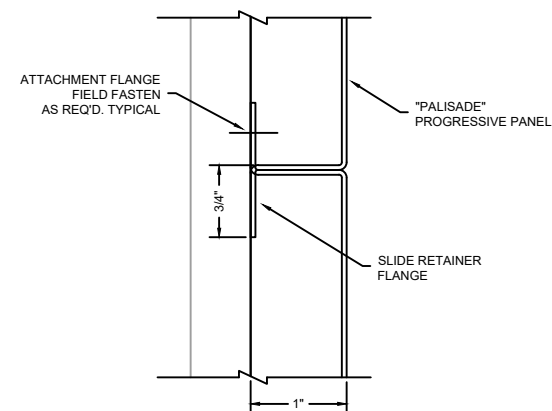
THESE DRAWINGS ARE THE PROPERTY OF I.A.S. AND ARE NOT TO BE COPIED OR TRANSMITTED WITHOUT PRIOR WRITTEN CONSENT OF I.A.S. ANY UNAUTHORIZED REPRODUCTION OR USE OF DESIGN INTENT AS ILLUSTRATED IS PROHIBITED WITHOUT THE EXPRESS WRITTEN CONSENT OF I.A.S.



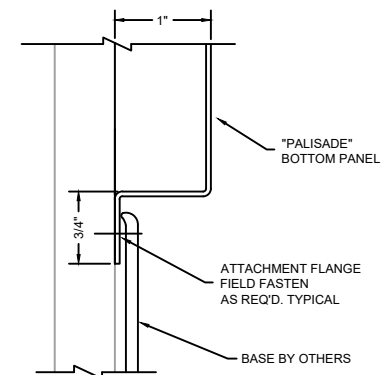
**1** "PALISADE" MOUNT ANGLE TOP DETAIL  
SCALE: HALF SIZE  
CLOSED END OPTION ( OPEN PLENUM )



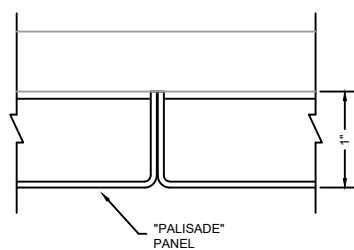
**2** "PALISADE" MOUNT FLANGE TOP DETAIL  
SCALE: HALF SIZE  
DIRECT MOUNT OPTION ( LIMITED CLEARANCE )



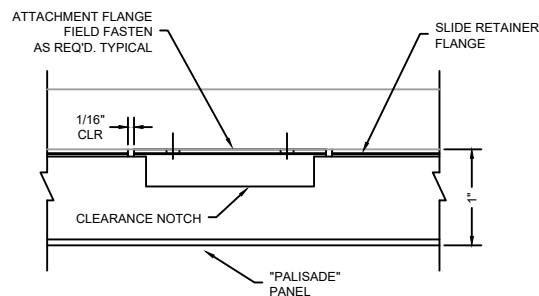
**3** "PALISADE" HORIZONTAL JOINT DETAIL  
SCALE: HALF SIZE



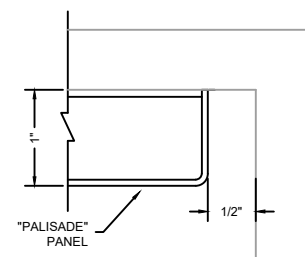
**4** "PALISADE" BOTTOM DETAIL  
SCALE: HALF SIZE



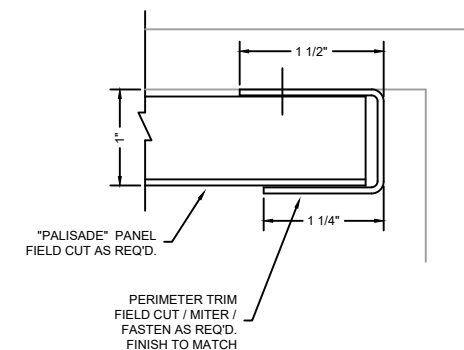
**5** "PALISADE" VERTICAL JOINT DETAIL  
SCALE: HALF SIZE



**6** "PALISADE" ZIPPER FLANGES DETAIL  
SCALE: HALF SIZE



**7** "PALISADE" SIDE DETAIL  
SCALE: HALF SIZE



**8** "PALISADE" SIDE TRIM DETAIL  
SCALE: HALF SIZE



3227 PROGRESS CIRCLE  
JURUPA VALLEY, CA 91752  
OFFICE: 909-947-3287  
CELL: 626-393-1209  
EMAIL: BRIANKING@INNOVATIVE-AS.NET

"PALISADE" ZIPPER SYSTEM  
MATERIAL : .040" / .063" ALUMINUM  
FINISH : PAINT / WOOD / ANODIZED  
PERFORATED / NON-PERFORATED

## "PALISADE" ZIPPER SYSTEM DETAILS

THESE DRAWINGS ARE THE PROPERTY OF I.A.S. AND ARE NOT TO BE COPIED OR TRANSMITTED WITHOUT PRIOR WRITTEN CONSENT OF I.A.S.  
ANY UNAUTHORIZED REPRODUCTION OR USE OF DESIGN INTENT AS ILLUSTRATED IS PROHIBITED WITHOUT THE EXPRESS WRITTEN CONSENT OF I.A.S.