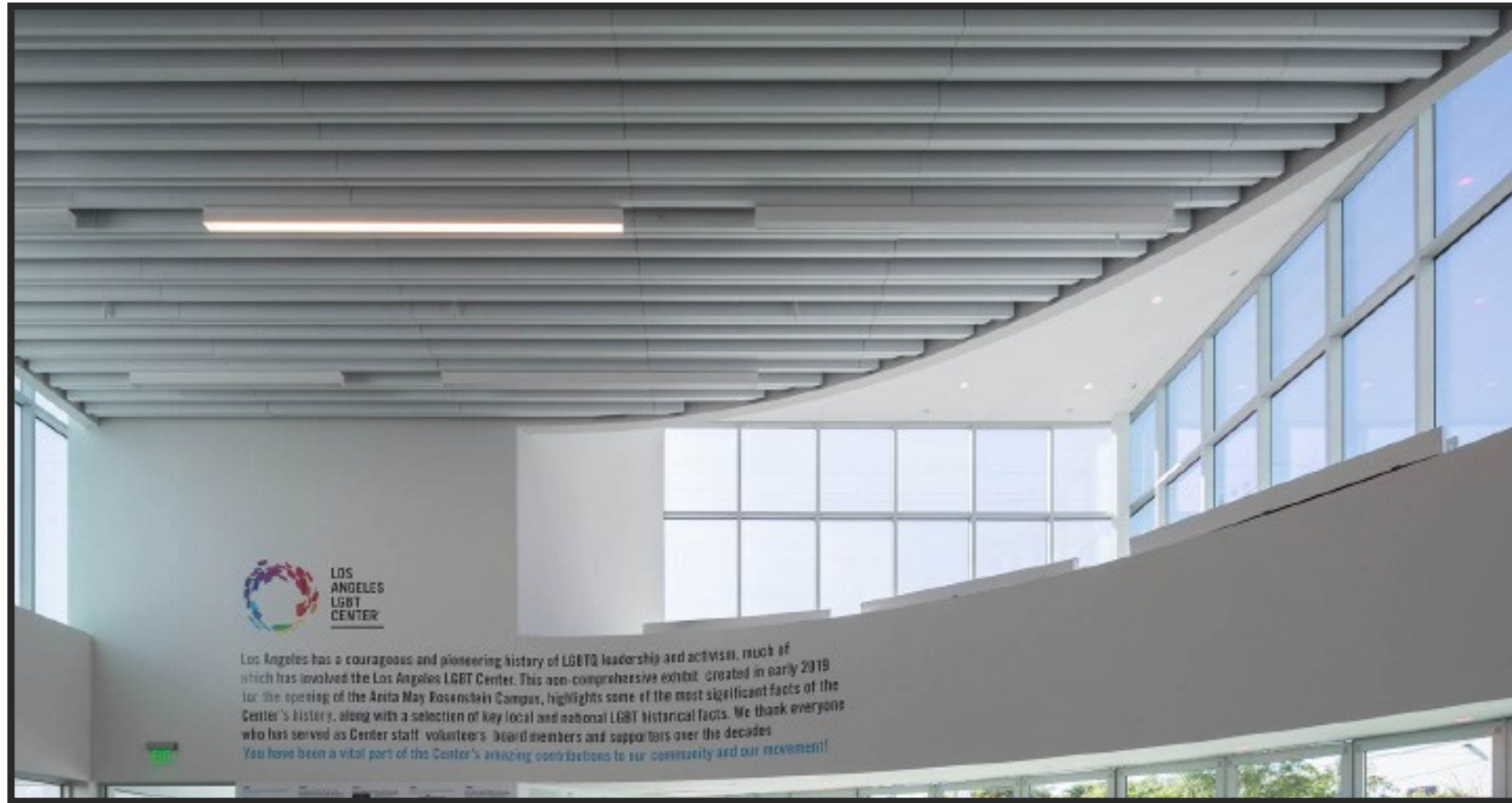


“SLATZ” Torsion Spring System



Project: Anita May Rosenstein Campus / Los Angeles, CA



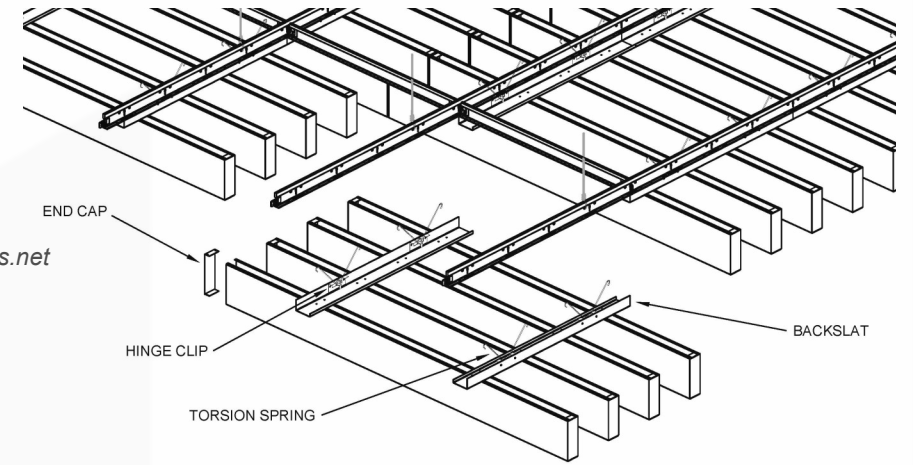
Los Angeles has a courageous and pioneering history of LGBTQ leadership and activism, much of which has involved the Los Angeles LGBT Center. This non-comprehensive exhibit, created in early 2019 for the opening of the Anita May Rosenstein Campus, highlights some of the most significant facts of the Center's history, along with a selection of key local and national LGBT historical facts. We thank everyone who has served as Center staff, volunteers, board members and supporters over the decades. You have been a vital part of the Center's amazing contributions to our community and our movement!



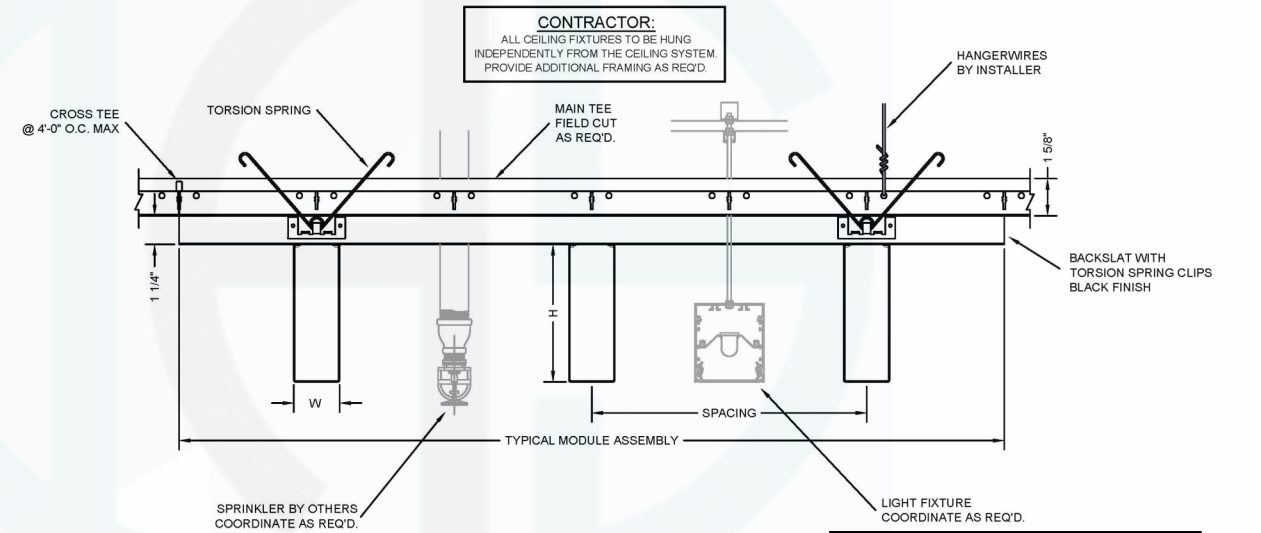
Office- 909-947-3287
Cell- 626-393-1209



brianking@innovative-as.net



ISOMETRIC



SECTION VIEW WIDTH



Individual Slatz panels are factory installed onto steel back slats. The steel back slats will be factory machined in order to put torsion spring clips in the accurate locations. Back slats are typically painted black. Typical panel assemblies are 2' x 8'. Spacings and panel profiles are fully customizable. Grid members are pre slotted to accept torsion springs and are typically painted black. Torsion springs are made from non corrosive stainless steel. This system integrates well with typical lighting conditions.

Information



Perforation

A wide variety of perforations are available. We have a pattern solution for aesthetics and acoustics



Sound Absorption

High NRC available with perforation and acoustical material combinations



HEAVY DUTY GRID SYSTEM SIEMIC ALL ZONES



We provide a Heavy Duty Rated grid system that meets all seismic zones and local building codes

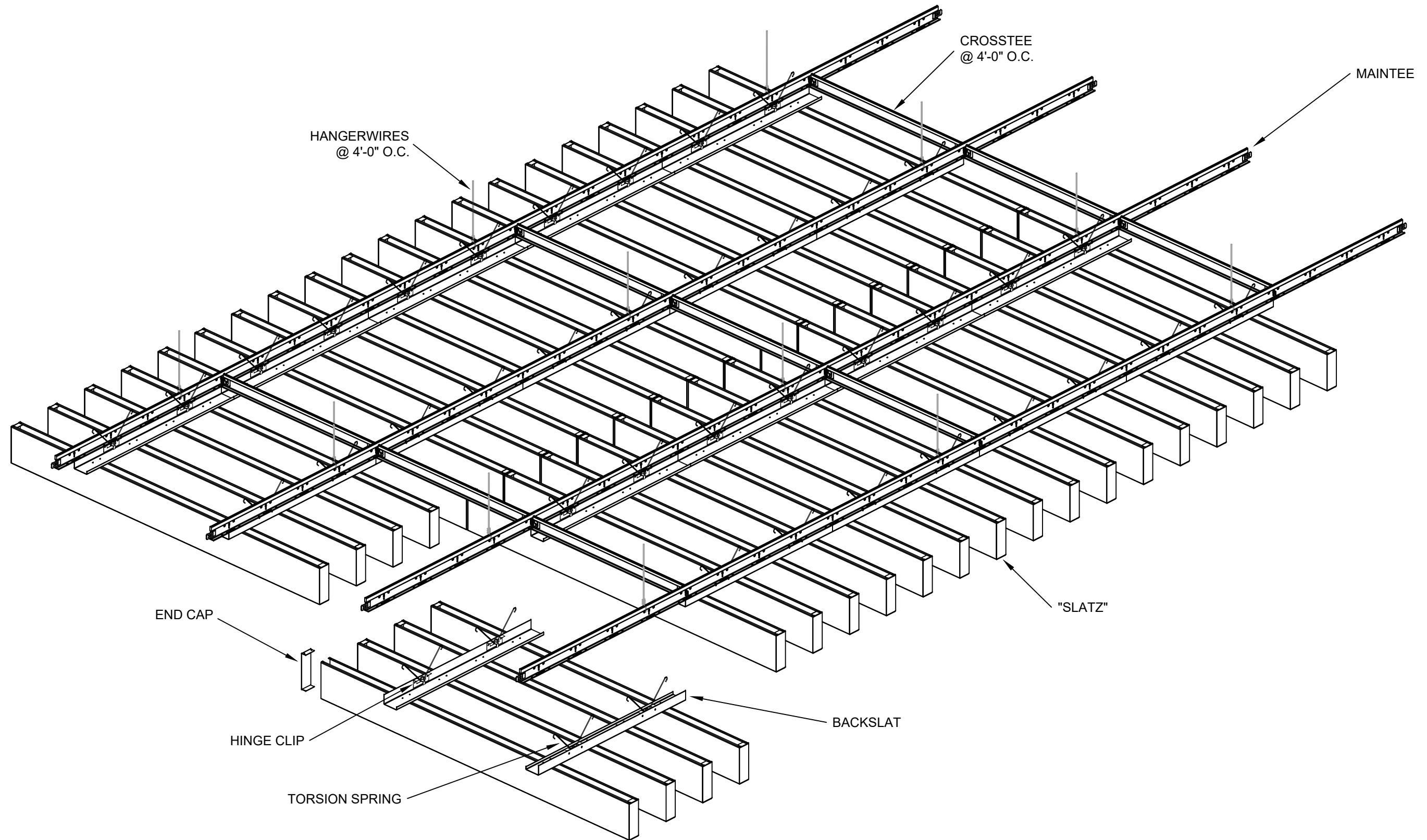


"Slatz" system is produced to meet ASTM 635 / ASTM 636
ASTM E84 / ASTM C423

www.innovative-as.net



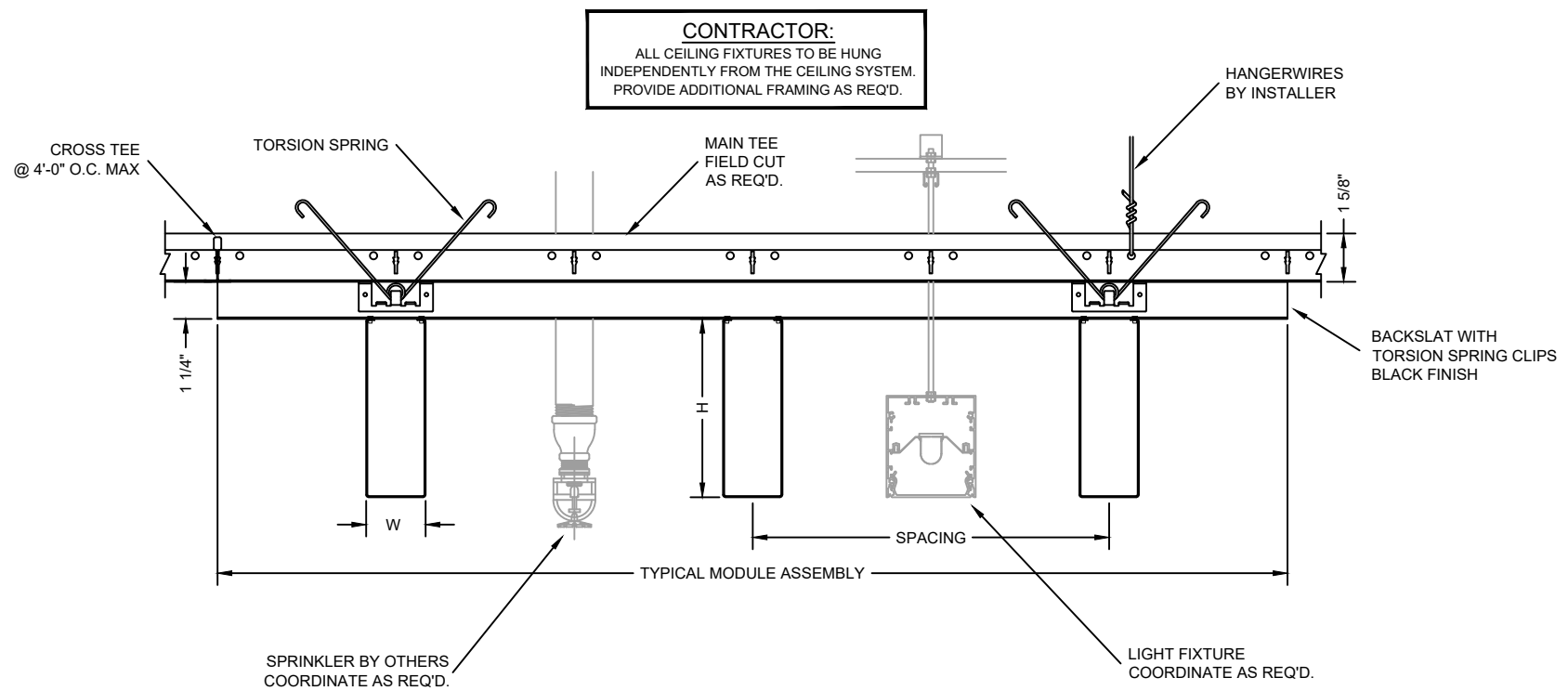
Green Building



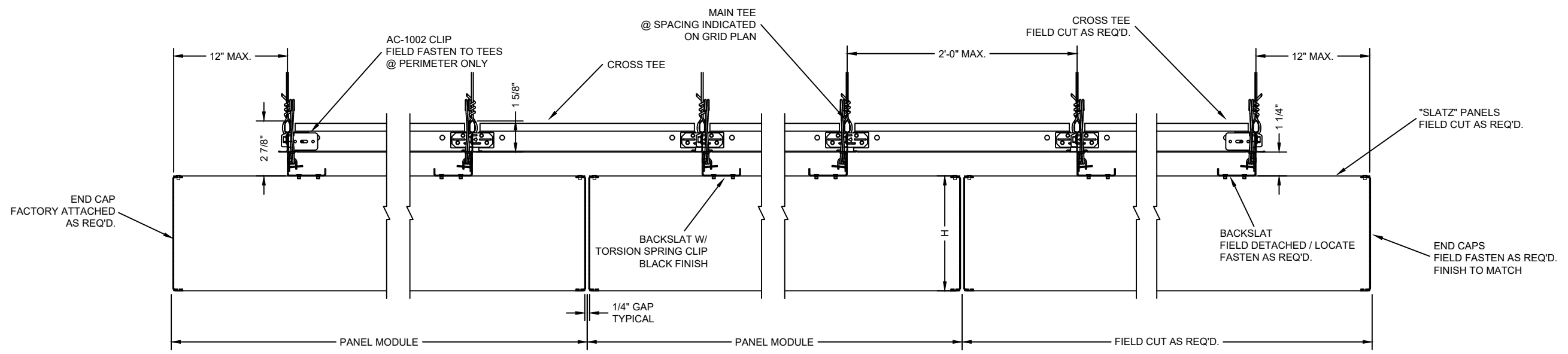
3227 PROGRESS CIRCLE
 JURUPA VALLEY, CA 91752
 OFFICE: 909-947-3287
 CELL: 626-393-1209
 EMAIL: BRIANKING@INNOVATIVE-AS.NET

"SLATZ" TORSION SPRING STYLE
 MATERIAL : .040" ALUMINUM
 FINISH : PAINT / WOOD / ANODIZED
 PERFORATED / NON-PERFORATED

GENERIC ISOMETRIC VIEW TORSION
THESE DRAWINGS ARE THE PROPERTY OF I.A.S. AND ARE NOT TO BE COPIED OR TRANSMITTED WITHOUT PRIOR WRITTEN CONSENT OF I.A.S. ANY UNAUTHORIZED REPRODUCTION OR USE OF DESIGN INTENT AS ILLUSTRATED IS PROHIBITED WITHOUT THE EXPRESS WRITTEN CONSENT OF I.A.S.



1 "SLATZ" MODULE / PROFILE DETAIL
SCALE: 2" = 1'-0"



2 "SLATZ" CEILING SECTION DETAIL
SCALE: 2" = 1'-0"



3227 PROGRESS CIRCLE
JURUPA VALLEY, CA 91752
OFFICE: 909-947-3287
CELL: 626-393-1209
EMAIL: BRIANKING@INNOVATIVE-AS.NET

"SLATZ" TORSION SPRING STYLE
MATERIAL : .040" ALUMINUM
FINISH : PAINT / WOOD / ANODIZED
PERFORATED / NON-PERFORATED

TYPICAL TORSION DETAILS

THESE DRAWINGS ARE THE PROPERTY OF I.A.S. AND ARE NOT TO BE COPIED OR TRANSMITTED WITHOUT PRIOR WRITTEN CONSENT OF I.A.S. ANY UNAUTHORIZED REPRODUCTION OR USE OF DESIGN INTENT AS ILLUSTRATED IS PROHIBITED WITHOUT THE EXPRESS WRITTEN CONSENT OF I.A.S.