

“SLATZ” Individual Blade Clip Baffle System



Project: Region 10 ESC Conference Center Renovations/ Richardson, TX




The Works




Perforation

The Blade Clip System Panels are typically 1” Wide x 4” Tall. Panels can be formed up to 1.5” wide x 6” Tall and up to 96” Long. Clips attach to 15/16” grid typically painted Black on all sides. End caps are factory attached when applicable and we can provide separate end caps and splice joiners for field cutting and assembly. A wide range of perforations are available with acoustical backing and infill available.




High NRC available with perforation and acoustical material combinations

Sound Absorption



We provide a Heavy Duty Rated grid system that meets all seismic zones and local building codes



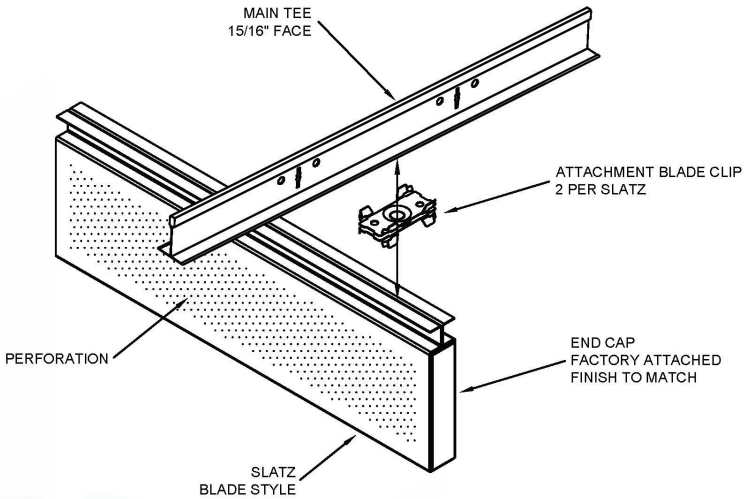
“Slatz” system is produced to meet ASTM 635 / ASTM 636
ASTM E84 / ASTM C423



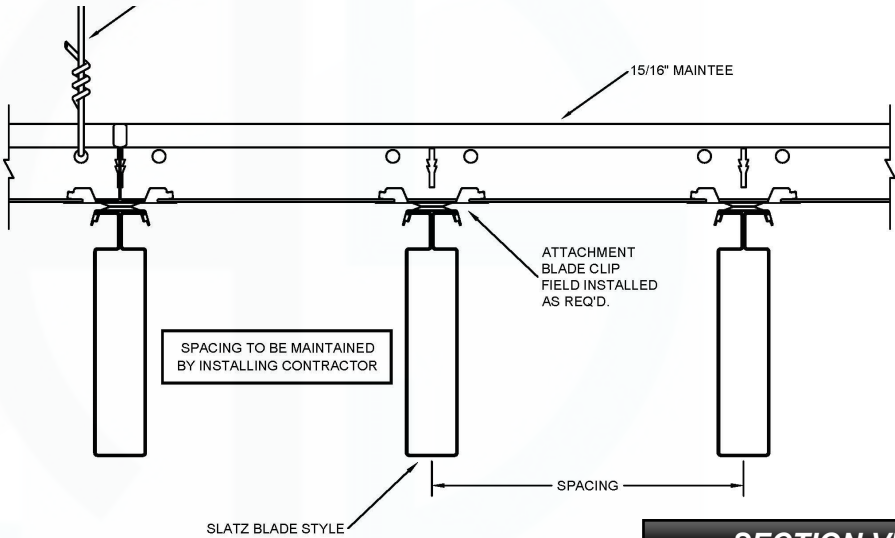
Office– 909-947-3287
Cell– 626-393-1209



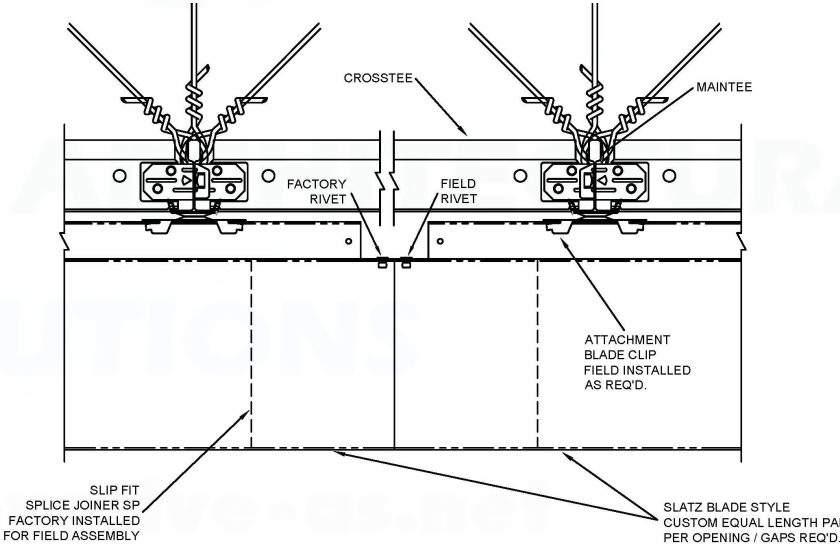
brianking@innovative-as.net



ISOMETRIC

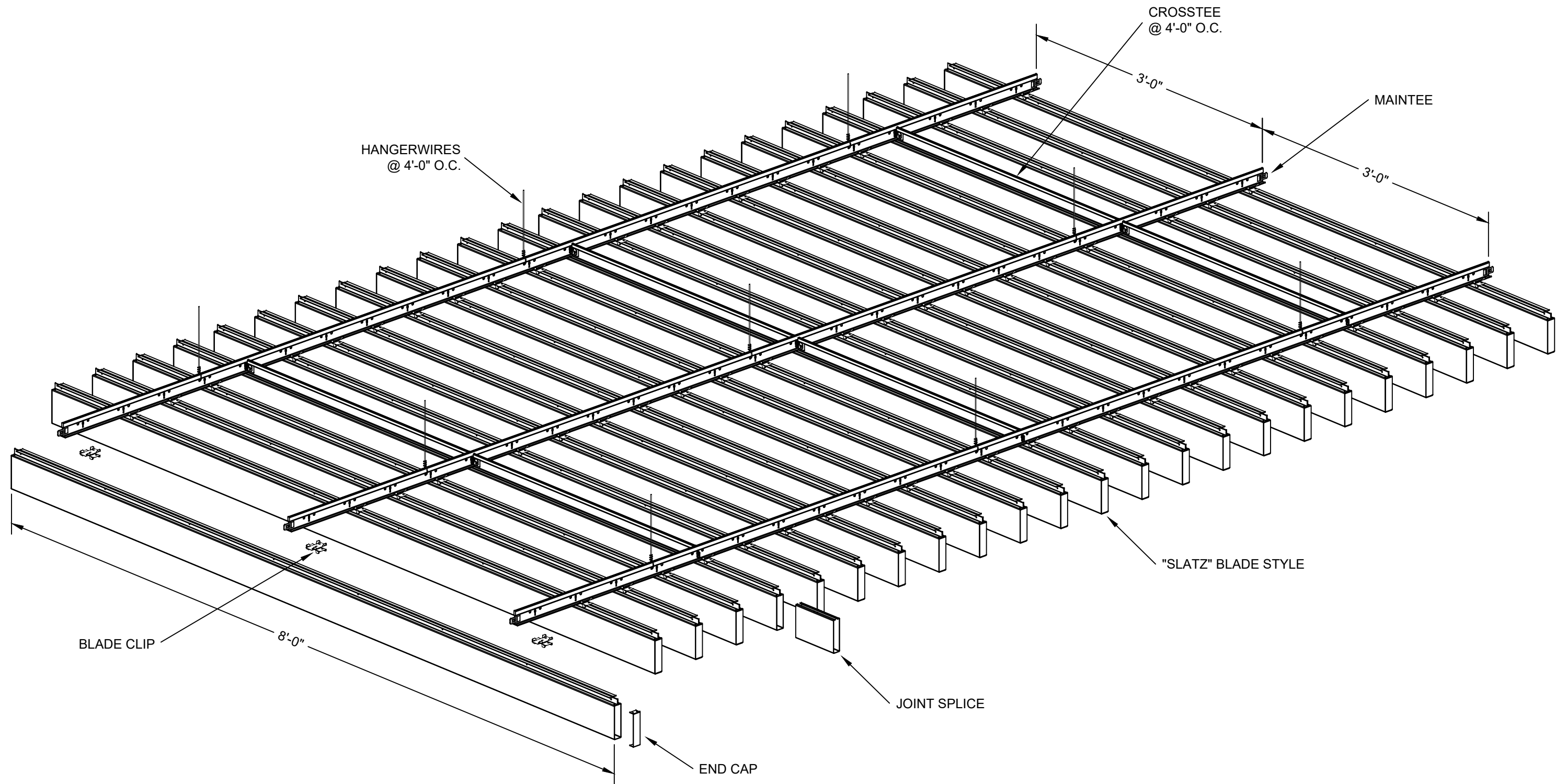


SECTION VIEW



SPLICE JOINT DETAL



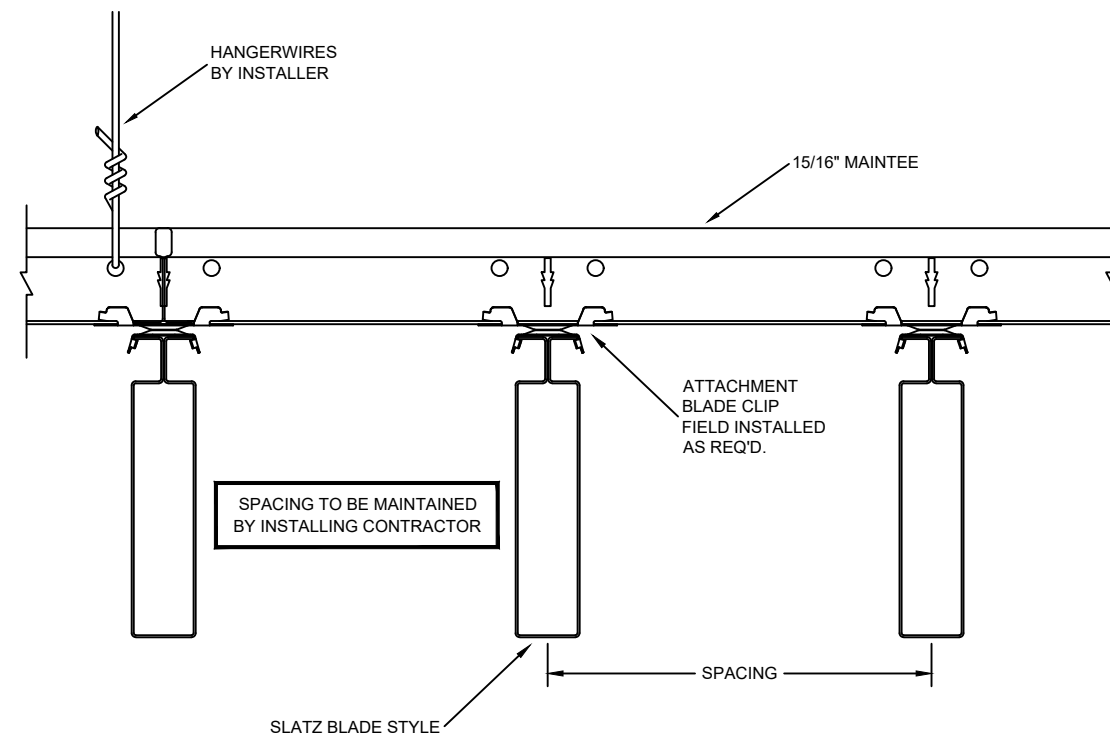


3227 PROGRESS CIRCLE
JURUPA VALLEY, CA 91752
OFFICE: 909-947-3287
CELL: 626-393-1209
EMAIL: BRIANKING@INNOVATIVE-AS.NET

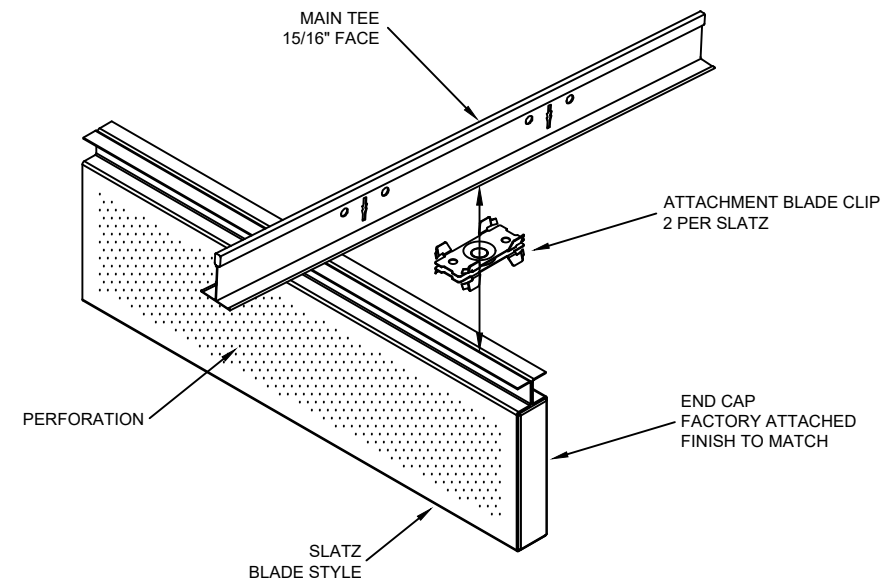
"SLATZ" BLADE CLIP-IN STYLE
MATERIAL : .040" ALUMINUM
FINISH : PAINT / WOOD / ANODIZED
PERFORATED / NON-PERFORATED

GENERIC BLADE STYLE ISOMETRIC VIEW

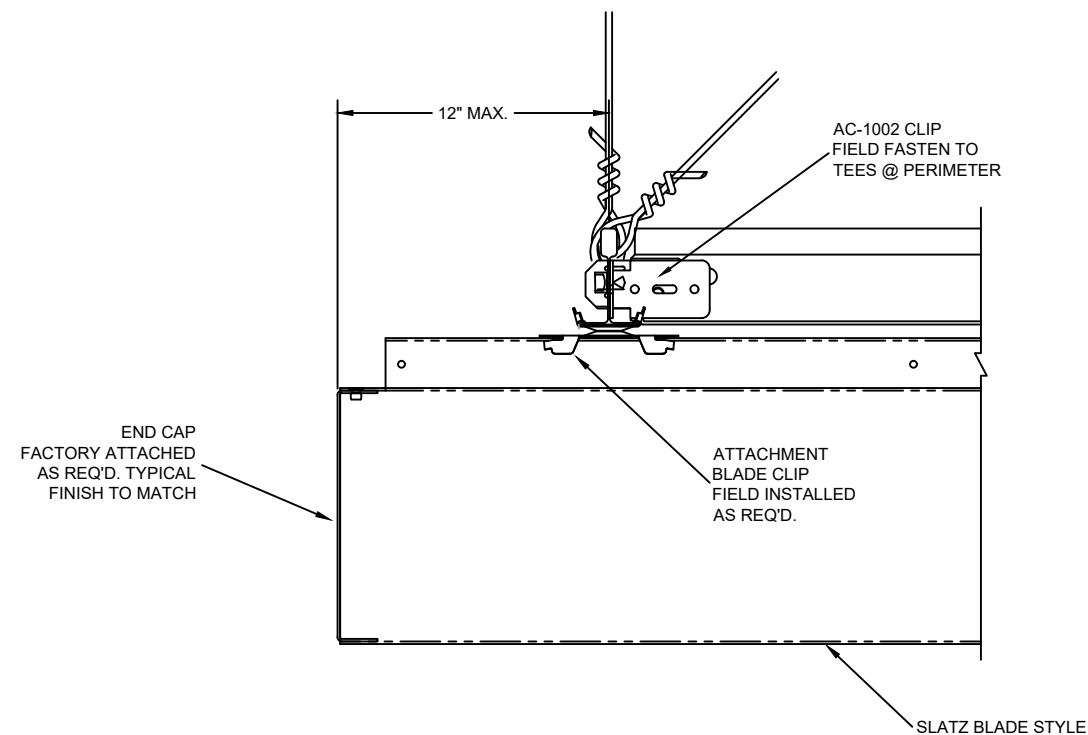
THESE DRAWINGS ARE THE PROPERTY OF I.A.S. AND ARE NOT TO BE COPIED OR TRANSMITTED WITHOUT PRIOR WRITTEN CONSENT OF I.A.S.
ANY UNAUTHORIZED REPRODUCTION OR USE OF DESIGN INTENT AS ILLUSTRATED IS PROHIBITED WITHOUT THE EXPRESS WRITTEN CONSENT OF I.A.S.



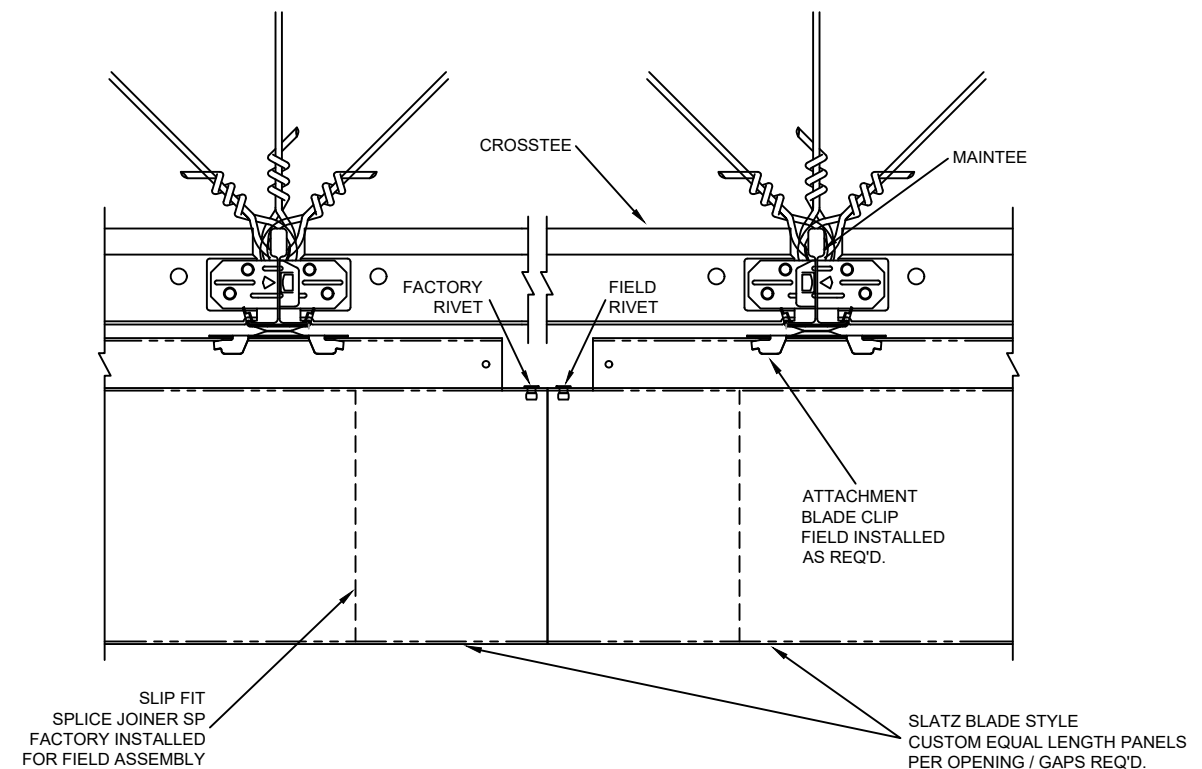
1 "SLATZ" MODULE / PROFILE DETAIL
SCALE: 4" = 1'-0"



2 "SLATZ" BLADE CLIP-IN ISOMETRIC
SCALE: N T S



3 "SLATZ" END CAP DETAIL
SCALE: 4" = 1'-0"



4 "SLATZ" SPLICE JOINT DETAIL
SCALE: 4" = 1'-0"



3227 PROGRESS CIRCLE
JURUPA VALLEY, CA 91752
OFFICE: 909-947-3287
CELL: 626-393-1209
EMAIL: BRIANKING@INNOVATIVE-AS.NET

"SLATZ" BLADE CLIP-IN STYLE
MATERIAL : .040" ALUMINUM
FINISH : PAINT / WOOD / ANODIZED
PERFORATED / NON-PERFORATED

TYPICAL BLADE STYLE DETAILS

THESE DRAWINGS ARE THE PROPERTY OF I.A.S. AND ARE NOT TO BE COPIED OR TRANSMITTED WITHOUT PRIOR WRITTEN CONSENT OF I.A.S.
ANY UNAUTHORIZED REPRODUCTION OR USE OF DESIGN INTENT AS ILLUSTRATED IS PROHIBITED WITHOUT THE EXPRESS WRITTEN CONSENT OF I.A.S.